

## Brighton & Hove Local Wildlife Sites Review 2017

Carried out on behalf of Brighton & Hove City Council

Review undertaken by East Sussex Local Sites Partnership Technical Panel

Report author: Dr Kate Cole, County Ecologist, East Sussex County Council

February 2020

Document version	Amendments
June 2017	Original document
November 2018	Southern part of Ovingdean Copse candidate LWS corrected on map of sites in Appendix 6b
October 2019	Report updated to incorporate actions taken following CPP2 consultation
February 2020	Report updated following Technical Panel review of representations made through CPP2 regarding proposed new sites.

## Contents

1	Summary .....	3
2	Introduction .....	3
3	Background .....	4
3.1	Local Wildlife Sites .....	4
3.2	Wildlife Sites in Brighton & Hove .....	5
3.3	Wildlife Sites in East & West Sussex .....	6
4	Review Methodology .....	8
5	Results .....	10
5.2	Existing SNCIs .....	10
5.2.2	Table 1: Existing SNCIs that lie wholly within the South Downs National Park and have been excluded from the current review .....	10
5.2.5	Table 2: Summary of discrepancies between 2013 and 2017 reviews of existing SNCIs, with reasons for recommendation for retention. ....	11
5.2.6	Table 3: Existing SNCIs to be retained and renamed as LWS. ....	12
5.3	Potential new LWS .....	13
5.3.6	Table 4: New LWS and their reason for designation. ....	15
5.3.8	Table 5: Recommended boundary changes to new LWS. ....	16
5.4	Candidate LWS .....	17
5.5	Rejected sites .....	18
5.5.4	Table 6: Sites which have been rejected as LWS, and reasons for that decision. ....	20
6	Discussion and Recommendations .....	21
6.1	Methodology .....	21
6.2	Representations on CPP2 Scoping Document .....	23
6.3	Representations on draft CPP2 consultation .....	24
6.4	Next Steps .....	26
7	Conclusions .....	26

Appendix 1: Brighton & Hove LWS Selection Criteria

Appendix 2: LWS Survey Form Template

Appendix 3: 2013 Selection Panel Summary Reports

Appendix 4: Sussex LWS Selection Criteria

Appendix 5: 2017 Technical Panel Review Assessment

Appendix 6: Maps showing LWS, Candidate LWS and Rejected Sites

## 1 Summary

- 1.1 The Brighton and Hove Local Wildlife Site 2013 review process was reviewed by the East Sussex Local Wildlife Sites Technical Panel in 2017 to endorse its findings and to ensure that the recommended suite of local wildlife sites is robust and fit for inclusion in the City Plan Part Two (CPP2). The review was carried out in accordance with Defra guidance. The results of the review were consulted upon in 2018 through the CPP2.
- 1.2 Representations made on the draft CPP2 consultation led to the reassessment of 11 sites, with the outcome summarised as follows. The boundary of one existing site was amended, two existing sites were resurveyed and retained unchanged, one proposed new site was resurveyed and a decision was taken not to proceed with the designation, and seven candidate sites were surveyed or reassessed. Of these candidate sites, two have been recommended for designation, four will not be designated, and one will be retained as a candidate LWS.
- 1.3 Taking into account actions following the draft CPP2 consultation, twenty six existing Sites of Nature Conservation were assessed as being worthy of retention, with the recommendation that they should be renamed as Local Wildlife Sites (LWS) and included in the Proposed City Plan Part Two policies map. Twenty-five new sites were also endorsed for designation and inclusion. One site was identified as having potential to be designated as LWS, pending an assessment of up-to-date survey information; this site is listed as a candidate LWS within the Proposed Submission CPP2.
- 1.4 The resultant suite of LWS within Brighton & Hove is therefore 51 LWS, 26 of which were previously designated as SNCIs, and one candidate site.

## 2 Introduction

- 2.1 In 2010, the City Ecologist for Brighton & Hove City Council (BHCC) embarked on a process to review Local Wildlife Sites (LWS) in Brighton and Hove, formerly known as Sites of Nature Conservation Importance (SNCIs). The process involved the Brighton & Hove Wildlife Forum and other local groups in a series of selection panels which met in July 2013.
- 2.2 Whilst the 2013 selection panels made recommendations as to the designation of a suite of LWS, some of which were already designated as SNCIs, the City Ecologist post was made redundant shortly afterwards and the process was never formally ratified by the Council.
- 2.3 As the review was not completed in time to be included in the City Plan Part One (CPP1), the CPP1 policies map shows the SNCIs that were designated by the Brighton & Hove Local Plan 2005. Once the City Plan Part Two is adopted, the LWS and (candidate)

cLWS sites shown on the Proposed Submission CPP2 policies map will supersede those SNCI sites shown on the adopted CPP1 policies map.

- 2.4 The current report documents work undertaken that is considered appropriate to endorse the 2013 process to help demonstrate that it is fit for inclusion in the CPP2. Further to representations made on the CPP2 consultation<sup>1</sup>, seven sites were resurveyed and information regarding a further four was reviewed. However, the majority of the report is based on surveys carried out for the 2013 review.
- 2.5 The current review has been restricted to those LWS, either existing SNCIs or proposed new sites, which occur within Brighton & Hove but outside the South Downs National Park. Ten sites (four existing SNCIs, and six proposed sites) lie partly within the National Park. Those parts of the sites that lie within the Park are outside the remit of the CPP2, but from an ecological perspective, they have been considered as a whole and therefore included in the current review. Those 10 cross boundary sites have also been included in the South Downs National Park Local Plan as have the sites that lie wholly within the National Park in Brighton & Hove. The review has also only considered whether or not sites meet criteria to be declared as LWS and not LNRs.

### 3 Background

#### 3.1 Local Wildlife Sites

- 3.1.1 In most areas, local authorities, working with other local partners, have set up systems of locally valued non-statutory sites. A Local Sites Review Group reported in 2000 that Local Sites systems varied considerably making it difficult to apply national or regional policies consistently or to target national funding streams. It recommended a consistent approach to provide a better basis for the appropriate management and protection of Local Sites. The Defra guidance published in 2006<sup>2</sup> sought to provide this consistent approach.
- 3.1.2 Local Sites contribute significantly to delivering both UK and local biodiversity targets by providing a comprehensive rather than a representative suite of sites, by providing wildlife refuges, and by complementing other site networks through their connecting and buffering qualities. They also represent local character and distinctiveness and contribute to the quality of life and well-being of the community, with many sites providing opportunities for research and education.
- 3.1.3 Although non-statutory, LWS are recognised by Government as making a vital contribution to biodiversity conservation and are protected through national planning

---

<sup>1</sup> The draft City Plan Part 2 was consulted upon 5 July – 13 September 2018 and consultation with landowners as part of the LWS review process was also undertaken.

<sup>2</sup> Defra, 2006. *Local Sites. Guidance on their identification, Selection and Management.*

policy<sup>3</sup>. Paragraph 170 of the National Planning Policy Framework (NPPF) 2019 states that planning policies and decisions should contribute to and enhance the natural and local environment by protecting and enhancing landscapes, sites of biodiversity or geological value and soils (in a manner commensurate with their statutory status or identified quality in the development plan). Paragraph 171 states that plans should distinguish between the hierarchy of international, national and locally designated sites and take a strategic approach to maintaining and enhancing networks of habitats and green infrastructure.

3.1.4 Policy CP10 of the CPP1<sup>4</sup> relates to biodiversity and states that the Council will develop programmes and strategies which aim to conserve, restore and enhance biodiversity and promote improved access to it. Such strategies include linking and repairing habitats and nature conservation sites to achieve landscape scale improvements to biodiversity. The policy also seeks to ensure that all development proposals conserve existing biodiversity.

3.1.5 It should be noted that designation as a LWS does not necessarily preclude development subject to appropriate avoidance of harm, including finding an appropriate balance between in-situ retention, mitigation and compensation.

## 3.2 Wildlife Sites in Brighton & Hove

3.2.1 The City's SNCIs were reviewed and updated in 1998/99, soon after Brighton & Hove was established as a Unitary Authority. The review methodology was endorsed by the then English Nature, amongst other organisations.

3.2.2 A review began in 2010, following detailed guidance published by Defra in 2006<sup>5</sup>. The review was to update survey data ensuring it was still relevant, to benefit from improved detection techniques (particularly with the support of improved aerial photography) and to ensure the Defra best practice guidance was fully integrated into the selection process.

3.2.3 A steering group with representatives from professional nature conservation organisations was first assembled in spring 2010 to agree and document the site selection criteria (Appendix 1), the sites to be surveyed and the survey form (Appendix 2). The organisations represented on the steering group were the Sussex Wildlife Trust, Natural England, South Downs National Park Authority, The Royal Society for the Protection of Birds and the Environment Agency.

---

<sup>3</sup> [National Planning Policy Framework 2019.](#)

<sup>4</sup> [Brighton & Hove City Plan Part One. Brighton & Hove City Council's Development Plan. March 2016.](#)

<sup>5</sup> Defra, 2006. *Local Sites. Guidance on their identification, Selection and Management.*

- 3.2.4 Within the CPP2 area, 76 potential LWS (including those already designated as SNCIs in CPP1) across the City were surveyed from autumn 2010 to autumn 2012 and the survey data was supplemented by records held by the Sussex Biodiversity Record Centre (SxBRC) and other sources.
- 3.2.5 Permission to survey was sought from landowners. In line with Defra guidance<sup>6</sup>, landowners were also invited to comment on recommendations for their site(s). Only sites where access permission was granted were surveyed. Three landowners provided comments on the survey process and their views were incorporated into the 2013 review.
- 3.2.6 In March 2013, selection panel invitations were sent out for the end of April 2013. The dates of the panels were set by the Council to address internal work programme deadlines and the steering group was not involved in the decision. Subsequently, the Brighton & Hove Wildlife Forum asked for more time to consider the survey information. The timetable was reviewed and it was recognised that the selection timetable was over-ambitious. The selection panels were delayed to July 2013 to accommodate this request, ensuring best practice would be followed throughout the selection process.
- 3.2.7 Three panels were organised covering east, central and west Brighton & Hove. CityWildlife 'naturewardens', local and national nature conservation organisations, friends groups and the Local Action Teams (LATs) were invited to attend or to submit comments in writing.
- 3.2.8 The role of the selection panels was to review the survey data presented against the pre-agreed selection criteria and to make a collective judgement on whether each site presented qualified for designation as a LWS. The panel also made recommendations on whether some sites should be considered by the Council for designation as statutory LNRs.
- 3.2.9 The three panel meetings were held on 09/07/13 at Saltdean Community Centre (east area), 17/07/13 at Portslade Town Hall (west area) and 23/07/13 at Brighton Town Hall (central area). Summary reports of the three meetings listing the attendees and the recommendations made are provided in Appendix 3.

### 3.3 Wildlife Sites in East & West Sussex

- 3.3.1 In the early 1990s, a network of sites was surveyed and notified as SNCIs in East and West Sussex as part of a partnership between local planning authorities and conservation bodies. Since then, there have been different arrangements in place for

---

<sup>6</sup> Ibid (as previously cited).

management LWS systems across different local planning authorities, with differing levels of resources available.

- 3.3.2 For many years, West Sussex County Council led the West Sussex SNCI Initiative. In 2015, following funding cuts, West Sussex County Council transferred lead responsibility for the West Sussex LWS system to the Sussex Biodiversity Record Centre. At that time the system was unfunded.
- 3.3.3 In East Sussex, the district and borough councils have historically taken responsibility for administering their own suites of LWS and have followed different approaches, depending on local priorities and the resources available to them. Some local authorities in East Sussex have carried out their own structured reviews of LWS.
- 3.3.4 Despite limited resources, a Local Sites Partnership (LSP) was established in East Sussex to take account of the Defra guidance. The Partnership, led by East Sussex County Council, collated statistics on the proportion of LWS in positive conservation management (extrapolated from the number of sites with management plans or in management agreements such as Environmental Stewardship) and reported annually to Defra under the Single Data List 160-00<sup>7</sup>.
- 3.3.5 The East Sussex LSP also established a Technical Panel made up of local experts to consider Local Site issues and reviews on an *ad hoc* basis. Amongst other things, the Technical Panel assessed the full review of LWS recently undertaken by Wealden District Council to inform their Local Plan, as well as a selection of sites that were recently re-surveyed through a project aimed at targeting those LWS where little information was available, mostly within Lewes District. The Technical Panel has also provided a view on the status of LWS where this has been called in to question through planning applications, e.g. Wanderdown Road Open Space in Brighton & Hove.
- 3.3.6 In an effort to provide consistency across Sussex and to share resources, as well as to comply with Defra guidance, the Sussex LWS Initiative was established in 2018 and aims to establish and maintain a functioning LWS system for Sussex, including the administrative counties of East Sussex and West Sussex and the unitary authority of Brighton & Hove. The Initiative has been designed to operate in accordance with Defra guidance and is supported by a broad partnership of organisations, working under the umbrella of the Sussex Local Nature Partnership. The Initiative is based in the Sussex Biodiversity Record Centre and is chaired by the County Ecologist for East Sussex County Council. The survey programme is delivered by experienced professional ecological surveyors and is designed to assess the extent to which sites meet local criteria (Appendix 4). Survey results are reviewed by a panel of local experts; the LWS

---

<sup>7</sup> [The single data list of central government data requirements from local government 2017-18.](#)

Technical Panel. It is the Panel's role to decide if a site should be selected as a LWS, or, in the case of existing LWS, if the site should be retained, modified or de-selected.

## 4 Review Methodology

- 4.1 A list of 142 sites was drawn up by the Brighton & Hove Steering Group in 2010 including sites within the National Park. In the case of the existing SNCIs, the boundaries of the surveys did not necessarily match that of the designated site, and in some cases, more than one survey covered a single site; the reason for this is not known. For ease of reference, Appendix 5 includes the existing site names and reference codes (e.g. BH02) and the survey names and reference numbers.
- 4.2 In 2013, survey information for Brighton & Hove sites was collated on the approved survey forms (Appendix 2), and that information was provided to all interested parties in advance of the panel meetings. The survey forms included a map of each survey site; these were digitised onto GIS.
- 4.3 Three selection panels met in July 2013 to consider the sites against the Brighton & Hove LWS criteria. As spaces on the panels were limited, they were allocated on a first come first served basis.
- 4.4 Each site was discussed and a consensus was reached on whether sites should be designated or not. Other than a summary of decisions, no formal notes were filed of the discussion process.
- 4.5 In 2017, the East Sussex Technical Panel was asked to review the 2013 panel decisions. At the time of the review, the Panel was made up of the following members: Dr Kate Cole MCIEEM (County Ecologist, East Sussex County Council); Thyone Outram (Community Ranger, Lewes District Council); Murray Davidson (Environment & Natural Resources Manager, Hastings Borough Council); Laura Brook (Conservation Officer, Sussex Wildlife Trust); Ben Rainbow (Arboricultural & Biodiversity Officer, Wealden District Council); Barry Kemp ACIEEM (Independent Consultant, Barry Kemp Conservation Ltd); Kate Ryland CEnv MCIEEM (Independent Consultant, Dolphin Ecological Services); and Lois Mayhew (Biodiversity Data Support Officer, Sussex Biodiversity Record Centre).
- 4.6 Given their professional involvement in nature conservation and/or in Strategic Planning Policy in Brighton & Hove, the following people were also involved in the Panel: Katharine Stuart (Senior Planning Policy Officer, South Downs National Park Authority); David Larkin (Conservation Manager, Brighton & Hove City Council); Rich Howarth (Biosphere Programme Manager, Brighton & Lewes Downs Biosphere Partnership); and Rebecca Fry (Principal Planning Officer, Brighton & Hove City Council).



- 4.7 The 2017 panel reviewed the survey sheets and maps, and from the information available, assessed whether the sites met the B&H LWS selection criteria and the Sussex criteria, with the results collated in a spreadsheet (Appendix 5). The 2013 panel decision was noted, as was the 2017 decision. Any discrepancies between the panel decisions were noted and discussed in the notes column.
- 4.8 The Brighton & Hove criteria include mandatory requirements, as well as contributory and descriptive features. For the purposes of the 2017 review, if a site met all of the mandatory criteria, it was assessed as qualifying as a LWS. Whether or not a site met the contributory and descriptive features was also noted if it met the mandatory criteria. The relevant columns are colour coded on the spreadsheet for ease of reference with the criteria.
- 4.9 If the site met one or more of the Sussex criteria, it was assessed as qualifying as a LWS.
- 4.10 It should be noted that the ecological value of a site is determined by many variables and there will always be the need for best professional judgement in site selection.
- 4.11 The GIS boundaries produced from the survey maps were then compared with the existing SNCI boundaries. Any boundary changes noted were assessed to see if they a) related to a new area/feature identified through the surveys that merited designation or no longer merited designation, b) were the result of a mapping anomaly, likely resulting from an improvement in digitisation and/or base maps, or c) showed the removal of features such as hard standing or buildings. In some cases where the area surveyed did not include areas of an existing SNCI as shown on the CPP1 policies map, a decision was made to retain the boundary unchanged in that area as there was insufficient information to justify any boundary changes that would result in a deletion to the site.
- 4.12 For some of the proposed new LWS, no surveys were carried out but the 2013 panel decision was that the site should be treated as if designated until survey information from an independent, qualified ecologist was provided to establish otherwise. In such cases, it was the opinion of the 2017 Panel that there was insufficient evidence to justify designation, but that the sites should be noted as candidate LWS, worthy of future consideration.
- 4.13 At the request of BHCC following the initial publication of the 2017 review, seven sites were surveyed by the Sussex LWS Officer and four were reassessed in the light of new information. The resultant recommendations were endorsed either by the original 2017 Technical Panel or by the Sussex LWS Technical Panel established through the LWS Initiative.

4.14 Citations for those sites qualifying as LWS have been produced using information from the survey forms. Copies of citations are available on request. Site owners/managers of the qualifying LWS, and of SNCIs which were recommended for de-selection, were notified and given the opportunity to respond to the recommendations.

## 5 Results

5.1 Full details of how each site, either existing SNCIs or proposed new sites, met the selection criteria, is provided in Appendix 5. The sites are shown on Map 1 (Appendix 6). A summary is provided below.

### 5.2 Existing SNCIs

5.2.1 There are 36 existing SNCIs within Brighton & Hove that lie within the National Park, and as such have not been included in this review (see paragraph 2.5 above). Existing sites within the National Park are listed in Table 1.

5.2.2 Table 1: Existing SNCIs that lie wholly within the South Downs National Park and have been excluded from the current review.

BH01 Cockroost Hill West	BH41 Happy Valley
BH03 Cockroost Hill East	BH44 Ovingdean Horse Paddocks
BH04 Cockroost Bottom Lynchett	BH45 Abinger Road Open Space
BH05 Foredown Ridge Earthworks	BH46 Bexhill Road, Woodingdean
BH06 Foredown Ridge Eastern Side	BH47 Cowley Drive Paddocks
BH08 Bridleway East of Benfield Bridge	BH48 Bostle Bottom
BH11 Brighton & Hove Golf Course	BH49 Castle Hill Arable Field
BH13 East Hill	BH50 Whiteway Lane
BH14 Waterhall	BH51 Balsdean Downland West
BH16 Green Ridge	BH52 High Hill Pasture
BH18 Coney Wood	BH53 Balsdean Downland East
BH19 Braypool Sports Ground	BH54 Wivelsfield Road Grassland
BH23 Ewe Bottom Hill	BH55 Balsdean Downland North
BH24 Chattri Down	BH56 Quarry Field
BH37 Woodingdean Cemetery	BH57 Looes Barn Woodland
BH38 Cattle Hill	BH58 Coombe Farm
BH39 Mount Pleasant Ovingdean	BH59 Roedean School Bank
BH40 St Wulfran's Wood	BH61 Ewe Bottom

5.2.3 Four sites (BH02 Mile Oak Fields, BH34 Sheepcote Valley, BH35 Westplain Plantation/Hog Plantation, and BH36 Tenant, Lain and Moon's Gate Woods) lie partly within the National Park. Whilst those parts of the sites that fall within the Park are

outside the remit of the CPP2, for the purposes of the technical review, they have been considered as a whole as they are ecologically coherent sites. Cross boundary sites are listed in a separate tab in the spreadsheet in Appendix 5.

5.2.4 There were 22 existing SNCIs within Brighton & Hove but outside the National Park, plus four which lie partially within the Park. The 2017 review recommends that all of those sites should be retained and renamed as LWS. This supports the recommendations made by the 2013 review in all but four cases: Bramble Rise Copse (BH17); Tivoli Copse & Railway Woodland (BH20); Brighton Station (BH25); and Honeysett (BH62). For these four sites, the 2013 review recommended either full or partial deletion of the sites, whereas the 2017 review recommended retention. The justification for the change in recommendation is provided in Table 2 below.

5.2.5 Table 2: Summary of discrepancies between 2013 and 2017 reviews of existing SNCIs, with reasons for recommendation for retention.

Site Name	2013 Panel	2017 Panel
BH17 Bramble Rise Copse	From the information available, the only reason the site was declined as a LWS was due to its small size.	The site meets Sussex criteria as it supports deciduous woodland (Habitat of Principal Importance under Section 41 of the NERC Act and BAP habitat). There are also records of house sparrow from the site (Species of Principal Importance under Section 41 of the NERC Act and BAP species; listed as Red on the Birds of Conservation Concern) and the site offers bat roost potential (all species of bats are fully protected under the Wildlife & Countryside Act 1981 and the Conservation of Habitats and Species Regulations 2010). The site is considered important in the urban context.
BH20 Tivoli Copse & Railway Woodland	The two halves of the site were considered separately (the site was split into two surveys) and the western half was declined as a LWS. The justification provided was that the majority of this part	It is the view of the 2017 panel that the site functions as a whole. Furthermore, it meets both Brighton & Hove and Sussex criteria as it supports deciduous woodland (Habitat of

Site Name	2013 Panel	2017 Panel
	of the site lies within Network Rail land is therefore without protection from clearance even if designated.	Principal Importance under Section 41 of the NERC Act and BAP habitat).
BH25 Brighton Station	The existing SNCI was split into four surveys, none of which completely matched the existing site and each of which was considered separately. The 2013 panel recommended that the southern third of the site should be deleted as at the time of the survey, it had been completely cleared in preparation for development.	The planning permission for which part of the site was cleared included conditions for the restoration of the site, and a semi-natural planting scheme was agreed and put in place. It is the view of the 2017 panel that the site should be retained as a linear site as it meets the criteria for connectivity and is an important site within the urban environment.
BH62 Honeysett	Although the site supports deciduous woodland, the site failed to meet Brighton & Hove criteria due to its small size.	The site meets Sussex criteria given the presence of a Habitat of Principal Importance and BAP habitat, as well as supporting a badger sett (protected species). The site is also of importance within the urban context.

5.2.5 Of the 26 existing sites recommended for retention, 13 are proposed for retention with no change to the boundary, whilst minor amendments are proposed to two to adjust for mapping anomalies. It is proposed that the boundaries of the remaining 11 are extended to take into account features identified through the 2013 review and associated surveys. The 26 existing SNCIs that have been proposed to be retained and renamed as LWS are listed in Table 3.

5.2.6 Table 3: Existing SNCIs to be retained and renamed as LWS.

BH02 Mile Oak Fields (part NP)	BH28 Brighton University
BH07 Emmaus Gardens & St Nicholas	BH29 Volk's Railway
BH09 Benfield Valley	BH30 Woodvale Extra-mural and Downs Cemeteries
BH10 Basin Road South	BH31 Black Rock Beach
BH12 Toad's Hole Valley	BH32 Wilson Avenue Whitehawk
BH15 Three Cornered Copse	BH33 Brighton Marina
BH17 Bramble Rise Copse	BH34 Sheepcote Valley (part NP)

BH20 Tivoli Copse & Railway Woodland	BH35 Westlain Plantation/Hog Plantation (part NP)
BH21 Foredown Allotments	BH36 Tenant Lain and Moon's Gate Wood (part NP)
BH22 Oakdene Southwick Hill	BH42 Ovingdean School Grounds
BH25 Brighton Station (Brighton Greenway)	BH43 Wanderdown Road Open Space
BH26 Hollingbury Industrial Estate	BH60 St Helen's Churchyard
BH27 Crespian Way	BH62 Honeysett

5.2.8 Through the draft CPP2 consultation process, representations were made by the site owners/managers for two of the above sites (BH10 Basin Road South and BH42 Ovingdean School Grounds) requesting amendments to the designations. The following action was taken to address these representations.

5.2.9 The owners of Basin Road South requested that the site not be designated on the grounds that it does not support coastal vegetated shingle. In response, the site was surveyed by the LWS Officer on 08/03/19. The survey found that the site continues to support vegetated shingle and meets the selection criteria. The site was therefore recommended for retention, and this recommendation was supported by the LWS Technical Panel. As such, the site remains listed in the Proposed Submission CPP2 and proposed update to the policies map and the site owners have been notified accordingly.

5.2.10 The owners of Ovingdean School Grounds requested that the playing fields be removed from the designation, on the basis that they considered it did not meet the selection criteria. The representation was accompanied by a survey report from a local ecological consultancy. The representation was considered by the Technical Panel, and the site boundary and citation have been amended to exclude the playing fields. The amended site is included in the Proposed Submission CPP2 and proposed update to the policies map and the site owners have been notified accordingly.

5.2.11 BH36 Tenant Lain and Moon Gate Wood LWS lies partly within the National Park. No survey information was available for this site at the time of the review, but as it has potential for biodiversity enhancements, the site within the City plan area was surveyed at the request of BHCC who own the site. A walkover survey was conducted by the LWS Officer who confirmed that it retains the features for which it was first designated. As such, the LWS is to be retained.

### 5.3 Potential new LWS

5.3.1 Fifty potential new sites, six of which lie partly within the National Park, were put forward for consideration as new LWS. Of these, the 2017 panel recommended 24

sites for designation as LWS, shown as green on the spreadsheet (Appendix 5). Twenty-two of these sites were also recommended as LWS in 2013. One site (Meadowvale) was declined as a LWS in 2013 but is recommended as a LWS by the 2017 panel as survey information has come to light since the 2013 review highlighting the importance of the site. Another site (Dyke Trail South) was declined as a LWS in 2013 on the grounds that the site was poorly managed with dumping being a major issue; this site has been recommended as a new LWS by the 2017 panel given its value as a wildlife corridor and the presence of protected species.

- 5.3.2 Representations were made by the landowners of one of the new sites, BH71 Hove Park Reservoir, that it did not meet the selection criteria. Since its original consideration in 2013, part of the site has changed from reservoir to residential. A review of information provided by the landowner confirms that this part of the site does not meet the selection criteria. The remainder of the site is owned by Southern Water. This portion of the site was visited by the LWS Officer on 21/09/18 who confirmed that it does not meet the selection criteria. The recommendation, supported by the LWS Technical Panel, is therefore that the site should not be designated as a LWS. The site has been deleted from the list of LWS in the Proposed Submission CPP2 and proposed update to the policies map and the landowners have been notified accordingly.
- 5.3.3 At the time of the draft CPP2 consultation, Patcham Court Field was proposed as a candidate LWS. This site met the Brighton & Hove criteria but was rejected by the 2013 panel. The reason for this decision is unclear as the 2011 survey confirmed the presence of slow worms on site. At the request of BHCC, the site was surveyed by the LWS Officer on 20/08/19 who confirmed that it meets the selection criteria. As such, the recommendation, supported by the LWS Technical Panel, is that the site should be designated as a LWS and has been included in the list of LWS in the Proposed Submission CPP2 and the Policies map updated accordingly.
- 5.3.4 At the time of the CPP2 consultation, Ovingdean Copse was proposed as a candidate LWS as it was recommended as a LWS in 2013 although no survey information was available. The site was surveyed by the LWS Officer on 30/09/18 and 08/02/19 at the request of BHCC and with the permission of the landowners. The site met the selection criteria as a wildlife corridor and was recommended as a new LWS, with that recommendation supported by the LWS Technical Panel. Following consultation with the landowners, representations were made by two regarding the designation process and the ecological validity of the recommendation. These representations were considered by the Sussex LWS Technical Panel on 17/12/19. The Panel considered that the area of scrub and scattered trees, the inclusion of which had been questioned, forms part of, and adds to, the wildlife corridor and should therefore be retained. It was also agreed that the boundary of the southern portion of the site should be amended to exclude a formal garden area. The citation and

boundary map have been amended accordingly and the landowners have been notified of the Panel's recommendation. The site is therefore now being recommended as a new LWS and is listed as a LWS in the Proposed Submission CPP2 and the proposed changes to the policy map has been updated accordingly.

5.3.5 As a result of the above amendments, 25 new LWS are recommended for designation. These LWS are listed in Table 4 with their main reasons for designation, and are shown on Map 1 (Appendix 6).

5.3.6 Table 4: New LWS and their reason for designation.

Site Name	Reason for designation
BH63 Braeside Avenue Scrub	Dense native scrub and semi-improved grassland with good invertebrate populations including S41/BAP species.
BH64 Cardinal Newman School	Mature deciduous woodland in an urban context with areas of standing dead wood.
BH65 Cliff Corner	Species-rich chalk grassland.
BH66 Cliff Road Paddock	Rough coastal grassland (including chalk grassland) with a significant population of common lizard.
BH67 Dorothy Stringer Wildlife Area	Variety of wildlife habitats including species-rich chalk grassland, pond and deciduous woodland.
BH69 Highcroft Villas	Semi-natural flower-rich grassland with population of slow worm.
BH70 Hodshrove Wood	Mosaic of habitats including deciduous woodland supporting population of slow worm.
BH72 Land at Westfield Avenue	Species-rich chalk grassland supporting basil thyme (S41/BAP species).
BH73 London Road Station	Large area of deciduous woodland in urban area. Supports population of slow worm and forms important wildlife corridor.
BH75 Park Royal & High School	Deciduous woodland, unusual in central Brighton.
BH76 Rottingdean Pond	Large pond (S41/BAP habitat) supporting population of common toad (S41/BAP).
BH77 Madeira Drive Green Wall	Potentially largest and oldest green wall in Britain with mixture of native and non-native species including Hoary Stock (Local BAP).
BH78 Meadowvale	Species-rich grassland with significant population of Red Star-thistle (S41/BAP species), plus other notable species including Hornet Robberfly (S41/BAP).
BH79 South Bevendean Down	Mosaic of woodland and scrub with good forest

Site Name	Reason for designation
	structure. High value for appreciation of nature.
BH80 St Leonard's Churchyard	Church offers bat roost potential. Site offers wildlife haven in urban environment and acts as a stepping stone.
BH81 Stevenson Road Quarry	Vegetated chalk cliffs. Key reptile site supporting three species of reptile.
BH82 Surrenden Crescent & Surrenden Road	Fungi.
BH83 Surrenden Field Copse	Deciduous woodland supporting badger.
BH85 Withdean Park Copse	Large area of mature deciduous woodland in urban context. Ancient woodland indicators.
BH86 Bevendean Horse Paddocks (part NP)	Mosaic of habitats supporting a number of notable species including Hornet Robberfly (S41/BAP) and the largest density of Common Frog known in the City.
BH87 Land at Coldean Lane (part NP)	Mosaic including ancient woodland, ex-arable land and semi-improved chalk grassland. Supports a number of protected and notable species.
BH88 Sidehill Scrub	Small but well established area of mixed scrub providing important wildlife corridor between the City and the Downs. Supports notable specimen of Wych Elm and large population of starlings (Red status on Birds of Conservation Concern).
BH89 Dyke Trail South	Highly diverse scrub connecting important wildlife sites across the urban fringe of north Hangleton. Supports population of slow worm.
BH100 Ovingdean Copse	Includes a strip of semi-natural broadleaved woodland (S41 habitat) and forms part of a wider network of woodland habitat within the local landscape.
BH101 Patcham Court Field	Supports S41/BAP habitat (hedgerow), national scarce species, a mosaic of habitats and provides connectivity with Braeside Avenue Scrub LWS and the A27 verge.

5.3.7 For six of the new LWS, the 2017 review has recommended some amendments to the boundaries from those proposed in 2013. A summary of those amendments and the reasons for them is provided in Table 5.

5.3.8 Table 5: Recommended boundary changes to new LWS.



Site	Boundary change
BH63 Braeside Avenue Scrub	Amend eastern boundary to avoid overlap with adjacent LNR.
BH67 Dorothy Stringer Wildlife Area	Include habitat around dew pond to provide buffer.
BH73 London Road Station	Exclude area to rear of 140-146 Springfield Road which has been cleared for development.
BH75 Park Royal & High School	Exclude buildings and hard standing.
BH80 St Leonard's Churchyard	Include church building in LWS.
BH89 Dyke Trail South	Exclude small woodland strip as poor quality.

#### 5.4 Candidate LWS

5.4.1 Seven additional sites were recommended for designation by the 2013 panel. No survey information was available for five of these sites, but the 2013 panel decision was that they should be treated as if designated until independent survey information is provided to prove otherwise. As there was insufficient information to assess these sites against either the Brighton & Hove or Sussex criteria, it is the opinion of the 2017 panel that these sites should not be designated as LWS. However, as the 2013 recommendation implies that the sites have ecological significance, it was recommended that the sites be retained as candidate LWS for the purposes of the draft CPP2 consultation.

5.4.2 One of the seven sites (Redhill Sports Ground) was recommended for designation in 2013, based on a survey report conducted to support a planning application for a housing development. Permission was granted in 2011 and the southern part of the site has now been developed. In the light of the development, there is insufficient information to assess the site against the selection criteria. However, as the development is restricted within the site, part of the site may still be worthy of consideration. As such, it is the opinion of the 2017 panel that the site should be retained as a candidate LWS.

5.4.3 One site (Patcham Court Farm) is allocated for development (in the 2016 adopted City Plan Part One) and is currently in pre-application discussions. As any planning decision would require an ecological assessment and the provision of appropriate mitigation, compensation and enhancement measures, there are unlikely to be any material benefits to designation at this stage. The decision was taken that the site should not be designated as a LWS and should be removed from the list of candidate sites. The site has been deleted from the Proposed Submission CPP2 and proposed update to the policies map and the landowners have been notified accordingly.

5.4.4 One site (Roundhill Copse) is an enclosed area at the back of private gardens. From an assessment of maps, aerial photographs and local biodiversity records, it is considered

unlikely that the site supports sufficient interest to meet the selection criteria. The recommendation, supported by the LWS Technical Panel, is therefore that this site should not be designated as a LWS and should be removed from the list of candidate sites. The Proposed Submission CPP2 and proposed update to the policies map has been amended accordingly and the landowners notified.

5.4.5 Two further candidate sites (The Engineerium and Beaufort Terrace) were surveyed by the LWS Officer on 21/09/18 following representations by the landowner, Southern Water, that they do not meet the criteria and their designation is not compatible with the primary function of the landowner. Site assessments confirmed that the sites do not meet the selection criteria. As such, the recommendation, supported by the Technical Panel, is that the designation should not be progressed. These two sites have therefore been removed from the list of candidate sites, the Proposed Submission CPP2 policy map has been amended accordingly and the landowner notified.

5.4.6 The two final candidate sites Patcham Court Field and Ovingdean Copse, following survey work, have been recommended by the Technical Panel to be designated as a LWS – see paragraphs 5.3.3- 5.3.4.

5.4.7 The candidate LWS (Redhill Sports Ground) is shown as amber on the spreadsheet (Appendix 5). The locations of the site is shown on Map 2 (Appendix 6), although it should be noted that at this stage, the boundary is indicative, subject to future survey findings. As this site is not formally designated, it does not have a LWS code. For ease of reference, the survey number is included in Appendix 5; these are the numbers used by the 2013 panels and are those used in the summary of decisions from those panels (Appendix 3).

5.4.8 The four sites that were proposed as LWS in 2013 with no survey information, that have now been reassessed and subsequently rejected, are listed in Table 6.

5.4.9 Candidate LWS should be given due consideration in the planning process. Opportunities should be sought to survey the site and to assess its formal designation.

## 5.5 Rejected sites

5.5.1 Fourteen potential sites were declined as LWS by the 2013 panel. This view was endorsed by the 2017 review as they did not meet the selection criteria. Rejected sites are shown in red on the spreadsheet (Appendix 5) and are listed below in Table 6, with the survey reference number provided in brackets. The location of the sites is shown on Map 3 (Appendix 6).

- 5.5.2 Five sites (Heath Hill Down, Burstead Wood, Hollingbury Golf Course, Hollingbury Wood and Queensdown), shown in bold in table 7, met both the Brighton & Hove and Sussex criteria. However, these sites are already designated as Local Nature Reserves, the first being within Bevendean Down LNR and the latter four within Wild Park LNR. It is the view of BHCC that additional designation as a non-statutory LWS would not provide any additional recognition or protection to the site, and as such, these sites are not being recommended as LWS under the 2017 review.
- 5.5.3 Including the four candidate sites discussed in the previous section (paragraphs 5.4.2 to 5.4.4), plus Hove Park Reservoir (paragraph 5.3.2) a total of 24 sites have therefore been rejected as LWS.

## 5.5.4 Table 6: Sites which have been rejected as LWS, and reasons for that decision.

Site Name	Reasons for rejection
Loxdale Centre (09)	Woodland is not semi-natural and is species poor; field layer is also species poor. Site does not meet B&H criteria. Insufficient information to assess the site against Sussex criteria.
Mill View Hospital (21)	Woodland falls below minimum size threshold of B&H criteria. Insufficient information to assess the site against Sussex criteria.
Alexandra Court (23)	Minimal interest. Site does not meet criteria.
BH71 Hove Park Reservoir (30)	Site does not meet selection criteria.
The Engineerium (38)	Site does not meet selection criteria.
St Andrew's Old Church (39)	Survey report states the site is known to have few wild areas where wildlife can survive. Insufficient information to assess the site against criteria.
Millers Road (43)	Species poor and falls below minimum size threshold for B& criteria. Insufficient information to assess against Sussex criteria.
Tongdean Rise (46)	Habitat below minimum size threshold for B&H criteria. Insufficient information to assess against Sussex criteria.
Scrub at Mill Hill Roundabout (51)	The site met only one (or possibly two) of the three mandatory B&H criteria. No rare or exceptional features recorded. Insufficient information to assess against Sussex criteria.
Black Lion Copse (52)	Site small and highly modified. Does not meet B&H or Sussex criteria.
Oak Close Copse (55)	Site considered too modified and fell below minimum size threshold for B&H criteria. Insufficient information to assess against Sussex criteria.
Preston Twins (56)	Nature conservation interest of site is to ancient elms which are already protected.
Howard Terrace Slopes (61)	Woodland is relatively recent and species poor and falls below the minimum size threshold on the B&H criteria. Insufficient information to assess against Sussex criteria.
Whittinghame Gardens (62)	Site below minimum size threshold on B&H

	criteria. Insufficient information to assess against Sussex criteria.
Patcham Court Farm (64)	The site has a long term allocation. Any development of the site will need to be informed by up-to-date ecological survey information. As such, it is unlikely that designated as a LWS would have any material benefit at this stage.
Roundhill Copse (72)	Site is an enclosed area at the back of private gardens and is unlikely to support sufficient interest to meet selection criteria.
Elmore Road Scrub (73)	Small area of much modified woodland with a high proportion of non-native species. The site meets Sussex criteria (presence of protected species) but overall the nature and condition of the site is not considered enough to merit designation.
Beaufort Terrace (74)	Site does not meet selection criteria.
<b>Burstead Wood (75) (part NP)</b>	Site sufficiently protected under LNR status.
<b>Hollingbury Wood (76) (part NP)</b>	Site sufficiently protected under LNR status.
<b>Hollingbury Golf Course (77) (part NP)</b>	Site sufficiently protected under LNR status.
<b>Queensdown (78) (part NP)</b>	Site sufficiently protected under LNR status.
<b>Heath Hill Down (88)</b>	Site sufficiently protected under LNR status.
Woollards Field (96)	Site was under development at the time of the 2013 review. Insufficient information to assess against B&H or Sussex criteria.

## 6 Discussion and Recommendations

### 6.1 Methodology

6.1.1 The NPPF states that the preparation and review of all policies should be underpinned by relevant and up-to-date evidence,<sup>8</sup> and the British Standards for Biodiversity<sup>9</sup> state that ecological information should be sufficiently up-to-date, i.e. not normally more than two/three years old. Most of the surveys used to inform the 2013 review were carried out between 2010 and 2012.

6.1.2 The 2013 review was therefore based on up-to-date information. It could be argued that the current review is not robust as it is based on old survey data. However, it should be noted that the review reported in this document was not meant to resurvey

<sup>8</sup> NPPF 2015. Paragraph 31.

<sup>9</sup> BS42020:2013. *Biodiversity – code of practice for planning and development*. BSI.

sites, but to endorse the 2013 review recommendations. Where insufficient information was available to endorse the decisions made in 2013, those sites have been surveyed and/or reassessed using the best available information, resulting in two sites being designated as LWS, and four being rejected from the LWS suite as they do not meet the selection criteria. The remaining candidate LWS (Redhill Sports Ground) should be targeted for survey as soon as possible.

6.1.2 It should also be noted that where up-to-date information is available, for example where surveys have been carried out in relation to planning applications, this information has been used to inform the process. In particular this applies to the existing LWS Wanderdown Road Open Space, and to two new sites, Meadowvale and London Road Station.

6.1.3 In light of the above, the 2017 review is considered suitably robust for the LWS to be fit for inclusion in the CPP2.

## 6.2 Representations on CPP2 Scoping Document

- 6.2.1 In response to the CPP2 Scoping Document, two of the twenty four respondents who commented specifically on LWS<sup>10</sup>, expressed concerns about the 2013 review. These were Brighton & Hove Wildlife Forum (BHWF) that raised a concern over data collation and Sussex Wildlife Trust (SWT) that felt sites should not be deselected due to a lack of access to the site and promoted the use of East and West Sussex LWS selection criteria. The aim of the current review was to reassess sites, both existing and new, against both the Brighton & Hove and the more recent Sussex wide selection criteria, to endorse the process undertaken in 2013. SWT have been involved in the current review and are satisfied that the selection process is suitably robust to be included in the CPP2.
- 6.2.2 SWT felt strongly that if existing sites were unable to be accessed for the 2013 review that they should remain an SNCI until evidence is available to enable a review. This view is supported by the 2017 panel and has been incorporated into the assessment of site boundaries; where a survey did not cover the whole of an existing SNCI, those areas outside the survey area have been retained within the LWS boundary, and the features retained within the citation.
- 6.2.3 SWT encouraged BHCC to consider the selection of new sites where information became available, and gave Meadowvale as an example. Meadowvale has been recommended as a LWS by the 2017 review in the light of information that has become available since the 2013 review.
- 6.2.4 SWT encouraged BHCC to adopt the Sussex LWS selection criteria; this was done for the 2017 review and BHCC has been working closely with the newly established Sussex LWS Initiative to adopt a Sussex wide process for the monitoring and review of LWS in the future.
- 6.2.5 BHWF encouraged BHCC to update SNCIs in accordance with the 2013 review. They also advocated the designation of new sites where new information becomes available and the adoption of a mechanism for putting forward and adopting new sites as they arise. As stated above, new information has been incorporated into the 2017 where it has become available and the current report makes recommendations for a Sussex wide LWS strategy.

---

<sup>10</sup> [Comments on City Plan Part Two Scoping Paper.](#)

### 6.3 Representations on draft CPP2 consultation

- 6.3.1 The owners and occupiers of the above sites have been notified of designations, provided with copies of site citations, and given the opportunity to make representations on the proposed designations<sup>11</sup>. All such have been incorporated into the review and discussed above.
- 6.3.2 Further representations were made by Eco 21<sup>st</sup> and another individual that the CPP2 recommendations ignored the 2013 review and that some LWS proposed at that stage had been excluded from the list. The current review and a parallel review carried out for the South Downs National Park Authority, was carried out by the Sussex LWS Technical Panel at the request of BHCC and the National Park, to ensure that the list of sites selected in 2013 met Defra guidelines and to formally endorse the list so it could be included with the CPP2 and the National Park Local Plan. As the 2013 review did not take account of any existing SNClS within Brighton & Hove, another aim of the current review was to align the 2013 surveys with existing sites where they overlapped. Appendix 5 of this report, and that covering the sites within the National Park, uses the existing SNCl codes and names and cross references them to the 2013 surveys. Where new sites were recommended for designation, these have been assigned new codes to bring them into line with the existing suite of sites within Brighton & Hove and more widely across Sussex. These codes were assigned by the Sussex Biodiversity Record Centre. Again, these are cross referenced within the reports and appendices.
- 6.3.3 In summary, of the 143 sites considered in 2013, 12 cross the administrative boundary of BHCC and the South Downs National Park Authority and were therefore considered in both reports. Seventy-two fell within the BHCC administrative area and are therefore considered in the current report. Fifty-seven fell within the South Downs National Park Authority's administrative area and were therefore considered in the National Park report. For 119 of the 143 sites considered, the 2017 review endorsed the 2013 recommendations. The 24 remaining sites can be broken down as follows. Seven sites were rejected in 2013 but recommended in 2017, one of which was highlighted by Eco 21<sup>st</sup> as a significant site. Nine sites were recommended in 2013 but rejected in 2017; of these, six were already LNRs and were therefore considered to be suitably protected, and three failed to meet either the Brighton & Hove or Sussex selection criteria. The 2013 review recommended that seven sites should be treated as if designated, despite there being no survey data provided. Given the lack of evidence to support the 2013 recommendation, the 2017 review did not support this view, but recommended those seven sites as potential future LWS worthy of further survey as it was clear that they have biodiversity interest. Those seven sites have since been considered further with two being designated, one retained as a candidate and

---

<sup>11</sup> The draft City Plan Part 2 was consulted upon 5 July – 13 September 2018 and consultation with landowners as part of the LWS review process was also undertaken.



four rejected. One additional site was rejected in 2013 but recommended as a potential future site in 2017.

6.3.4 Eco 21<sup>st</sup> also made reference to LNRs and Local Geological Sites (LGS). Those sites are outside the remit of the current review. However, all of the LNRs listed have been declared and two of the LGS listed have been designated by the Sussex Geodiversity Partnership. There is not currently capacity or resources to consider any new sites to be included in the CPP2. Additional sites put forward by Eco21st have been forwarded to the Sussex LWS Initiative and will be considered as resources become available.

## 6.4 Next Steps

- 6.4.1 As stated above, the current review has simply been to endorse the 2013 process. It should be recognised that the suite of LWS should be regularly monitored and reviewed to not only ensure that BHCC meets its duties and responsibilities under the Natural Environment and Rural Communities Act 2006 and the NPPF, but also to ensure a robust and up-to-date evidence base against which planning policies and decisions are assessed.
- 6.4.2 In the first instance, it is recommended that a prioritisation exercise is undertaken to prioritise the sites for review. In line with studies that have been undertaken in East and West Sussex, this should be based on factors including time since the last visit/assessment, threat, habitat fragility, ownership and whether agreed management is in place.
- 6.4.3 The review process should also be carried out for those Brighton & Hove sites that lie within the National Park. It is understood that this is in hand, the 2017 panel having begun the process.

## 7 **Conclusions**

- 7.1 The current review of the 2013 LWS selection programme has endorsed the process, with the majority of sites proposed for designation in 2013 being carried forward for inclusion in the CPP2. Where there has been a change in recommendation between the reviews, this has predominantly been based on a change in site conditions resulting from development, or on additional information becoming available in the interim period. Where recommendations made in 2013 for the designation of new sites could not be endorsed due to the lack of survey data, these sites have been surveyed/reassessed resulting in two being designated, four not being designated and one retained as a candidate LWS. Representations made on the draft CPP2 consultation led to the reassessment of 11 sites.
- 7.2 Of the 26 existing SNCIs that lie outside or partly within the National Park, all are recommended for retention and should be renamed as LWS in line with Defra guidance. Twenty-five new LWS have been recommended as well as one candidate LWS. These 51 LWS and one candidate LWS are listed in the Proposed Submission City Plan Part 2 and included in the proposed update to the policies map.

# Brighton & Hove Local Wildlife Sites Project

## Selection Criteria

The Local Wildlife Site Selection panels will use these criteria to guide the selection of Local Wildlife Sites and proposed Local Nature Reserves in Brighton and Hove. They have been agreed by a steering group with representatives from Natural England, the South Downs National Park, the Sussex Wildlife Trust and the RSPB to ensure all the sites chosen will stand up to independent scrutiny.

Please do not be put off by all the detail! The selection criteria are for guidance only – each decision is ultimately down to the selection panels, based on their knowledge and experience of the natural environment in and around Brighton and Hove.

### KEY

Mandatory requirement
Contributory feature
Descriptive feature

Criteria	Local Wildlife Sites*	Local Nature Reserves*
<b>1. Size</b>	Site contains habitats which meet or exceed the size thresholds set out in Annex 1	
<b>2. Diversity</b>	Site contains habitats which meet or exceed the diversity thresholds set out in Annex 1	
<b>3. Rare or Exceptional feature</b>	The site contains species which meet or exceed the thresholds set out in Annex 2	
	A nature conservation feature (other than an important species or group of species) which is rare or unusual in Brighton and Hove	
<b>4. Naturalness</b>	<ul style="list-style-type: none"> <li>a. Presence of 'edge' habitats</li> <li>b. Diverse habitat structure</li> <li>c. Vegetation predominantly comprises native species</li> </ul>	
<b>5. Fragility</b>	Features recognised as being of nature conservation importance are known to be vulnerable to damage or under threat on the site (the threat must be described with evidence)	
<b>6. Typicalness</b>	A good example of a natural habitat listed in Annex 1 in the Brighton and Hove context. In identifying good examples, attention will be paid to habitat structure, management, typical and unusual species in conjunction with the criteria set out in Annex 1.	
<b>7. Recorded history and cultural associations</b>	The site is associated with the historical development of Brighton and Hove or has a notable history	
<b>8. Connectivity within the</b>	a. Although mathematical models exist for measuring habitat connectivity, they are beyond the scope of this study. Instead, sites within 200m of an	

<b>landscape</b>	important habitat will be deemed to have high connectivity.	
<b>9. Appreciation of nature</b>	a. Site used by the public for quiet recreation (describe evidence)	
<b>10. Ecosystem Services</b>	Site likely to offer ecosystem service benefits by virtue of its location, vegetation, degree of public access or management	
<b>10. Value for learning</b>	a. Site has educational visits from local schools, clubs or societies specifically to appreciate nature OR	a. Site has educational visits from local schools, clubs or societies specifically to appreciate nature OR
	b. The site has a realistic potential of educational visits from local schools, clubs or societies specifically to appreciate nature (the mechanism for delivery must be described).	b. The site has a realistic potential of educational visits from local schools, clubs or societies specifically to appreciate nature (the mechanism for delivery must be described).
<b>11. Management</b>	a. The site is subject to a long term management agreement and is being managed in a way which conserves its nature conservation interest OR	a. The site is subject to a long term management agreement and is being managed in a way which conserves its nature conservation interest OR
	b. The site has a realistic potential of being subject to a long term management agreement and being managed for its nature conservation interest (the mechanism for delivery must be described).	b. The site has a realistic potential of being subject to a long term management agreement and being managed for its nature conservation interest (the mechanism for delivery must be described).

In Brighton and Hove Local Nature Reserves differ from Local Wildlife Sites in having a distinct role for education / appreciation of nature and in being managed long term specifically for wildlife conservation.

### **Annex 1: Minimum thresholds for important habitats in Brighton and Hove**

<b>Important Habitats</b>	<b>See note number</b>	<b>Minimum threshold for Local Wildlife Site selection</b>
Ancient woodland	1	All identified ancient woodland
'Veteran' trees	1	All veteran trees, when combined with other qualifying features
Arable fields and their margins	2	Single field
Coastal vegetated shingle	3	All sites which meet the qualifying criteria
Hedgerows	4	All hedgerows which meet the qualifying criteria
Intertidal chalk	5	N/A

Lowland calcareous (chalk) grassland	6	0.1 ha
Lowland mixed deciduous woodland	7	All lowland mixed deciduous woodland over 0.25 ha + smaller blocks of woodland which meet the qualifying criteria
Maritime cliff and slope	8	N/A
Open Mosaic Habitats on Previously Developed Land	9	0.1 ha
Ponds	10	All ponds which meet the qualifying criteria
Saline lagoons	11	No minimum size
Traditional Orchards	12	No minimum size
Scrub Communities	13	All Structurally diverse and species-rich scrub over 1 ha All gorse scrub over 1 ha Smaller blocks of scrub which meet the qualifying criteria
Mosaic habitats	14	Any size which meets the qualifying criteria

## **Notes for Annex 1**

### **1. ANCIENT WOODLAND AND 'VETERAN' TREES**

Ancient woodland is defined as woodland which has been under continuous tree cover (other than temporary clearance as a part of normal woodland management) since at least 1600 AD.

The Government's Planning Policy Statement 9 states that ancient woodland is 'a valuable biodiversity resource both for its diversity of species and for its longevity as woodland' ((paragraph 10). Local authorities are encouraged to protect it.

According to Natural England<sup>1</sup>, a veteran tree can be defined as: 'a tree that is of interest biologically, culturally or aesthetically because of its age, size or condition'. Some trees are instantly recognisable as veterans but many are less obvious. The girth of a tree is not a reliable way of assessing a veteran tree because different species and individuals of tree have very different life spans and grow at different rates.

A revision of the ancient woodland inventory of Brighton and Hove was published by the Weald and Downs Ancient Woodland Survey<sup>2</sup>. The survey mapped just under 94 hectares of ancient woodland in the city.

**The following should be selected as Local Wildlife Sites:**

- All ancient woodland

<sup>1</sup> Natural England IN13 - Veteran Trees: A guide to good management

<sup>2</sup> Weald and Downs Ancient Woodland Survey 'A revision of the Ancient Woodland Inventory for Brighton and Hove' January 2010

- Designation will be supported by the presence of a veteran tree.
- Veteran trees with substantive nature conservation value (as defined by these Local Wildlife Site selection criteria) will be designated.

## 2. ARABLE FIELDS AND THEIR MARGINS

The downland around Brighton and Hove has been traditionally managed as 'mixed farmland' with a combination of permanent pasture and arable, for hundreds, if not thousands of years. The 2009 biodiversity audit of the city recorded over 1,670 hectares arable land.

Various species have become associated with the arable habitat, including specialist plants, invertebrates, some mammals (such as brown hare (*Lepus europaeus*)) and several species of nesting and over-wintering birds, such as skylark (*Aluada arvensis*), grey partridge (*Perdix perdix*) and lapwing (*Vanellus vanellus*).

The biodiversity of arable fields generally has seriously declined, mainly as a result of changing management practices, the use of selective herbicides, seed-cleaning techniques and competitive crop variants.

Identifying the most important remaining arable fields for biodiversity can be difficult, because most species associated with arable are highly mobile. Arable annual plants are the exception, in that they often reoccur at the same location year after year, normally at the margins of fields which have escaped pesticide applications. For this reason, the presence of arable annuals will be used as the benchmark for assessing potential Local Wildlife Sites on arable land.

The following should be selected as Local Wildlife Sites:

- Single fields with boundaries that contain 8 or more of the arable annual species listed in Table 1.
- Designation may be supported by the presence of associated invertebrates, birds and mammals.

Table 1. Indicator Species for Arable fields and their margins (from <http://www.arableplants.org.uk>)

Pheasant's-eye	( <i>Adonis annua</i> )
Blue Pimpernel	( <i>Anagallis arvensis ssp.foemina</i> )
Corn Chamomile	( <i>Anthemis arvensis</i> )
Annual Vernal-grass	( <i>Anthoxanthum aristum</i> )
Loose Silky-bent	( <i>Apera spica-venti</i> )
Thale Cress	( <i>Arabidopsis thaliana</i> )
Rye Brome	( <i>Bromus secalinus</i> )
Cornflower	( <i>Centaurea cyanus</i> )
Small Toadflax	( <i>Chaenorhinum minus</i> )
Corn Marigold	( <i>Chrysanthemum segetum</i> )
Dwarf Spurge	( <i>Euphorbia exigua</i> )
Sun Spurge	( <i>Euphorbia helioscopia</i> )
Broad-leaved Spurge	( <i>Euphorbia platyphyllos</i> )
Black-bindweed	( <i>Fallopia convolvulus</i> )
Red-tipped Cudweed	( <i>Filago lutescens</i> )
Dense-flowered Fumitory	( <i>Fumaria densiflora</i> )

Common Ramping-fumitory	( <i>Fumaria muralis ssp. boraei</i> )
Common Fumitory	( <i>Fumaria officinalis</i> )
Red Hemp-nettle	( <i>Galeopsis angustifolia</i> )
Smooth Cat's-ear	( <i>Hypochaeris glabra</i> )
Sharp-leaved Fluellen	( <i>Kickxia elatine</i> )
Round-leaved Fluellen	( <i>Kickxia spuria</i> )
Henbit Dead-nettle	( <i>Lamium amplexicaule</i> )
Cut-leaved Dead-nettle	( <i>Lamium hybridum</i> )
Yellow Vetchling	( <i>Lathyrus aphaca</i> )
Venus's-looking-glass	( <i>Legousia hybrida</i> )
Field Gromwell	( <i>Lithospermum arvense</i> )
Weasel's-snout	( <i>Misopates orontium</i> )
Mousetail	( <i>Myosurus minimus</i> )
Prickly Poppy	( <i>Papaver argemone</i> )
Long-headed Poppy	( <i>Papaver dubium</i> )
Babington's Poppy	( <i>Papaver dubium ssp. lecoqii</i> )
Rough Poppy	( <i>Papaver hybridum</i> )
Common Poppy	( <i>Papaver rhoeas</i> )
Corn Parsley	( <i>Petroselinum segetum</i> )
Cornfield Knotgrass	( <i>Polygonum rurivagum</i> )
Corn Buttercup	( <i>Ranunculus arvensis</i> )
Small-flowered Buttercup	( <i>Ranunculus parviflorus</i> )
Hairy Buttercup	( <i>Ranunculus sardous</i> )
Shepherd's-needle	( <i>Scandix pecten-veneris</i> )
Field Madder	( <i>Sherardia arvensis</i> )
Night-flowering Catchfly	( <i>Silene noctiflora</i> )
Corn Spurrey	( <i>Spergula arvensis</i> )
Field Woundwort	( <i>Stachys arvensis</i> )
Field Penny-cress	( <i>Thlaspi arvense</i> )
Spreading Hedge-parsley	( <i>Torilis arvensis</i> )
Knotted Hedge-parsley	( <i>Torilis nodosa</i> )
Keeled-fruited Cornsalad	( <i>Valerianella carinata</i> )
Narrow-fruited Cornsalad	( <i>Valerianella dentata</i> )
Common Cornsalad	( <i>Valerianella locusta</i> )
Green Field-speedwell	( <i>Veronica agrestis</i> )
Grey Field-speedwell	( <i>Veronica polita</i> )
Field Pansy	( <i>Viola arvensis</i> )
Wild Pansy	( <i>Viola tricolor</i> )

### 3. COASTAL VEGETATED SHINGLE

Coastal vegetated shingle is both a national and Sussex BAP habitat and listed in Annex 1 of the EC Habitats Directive.

Due to the intensive amenity use of the beaches in Brighton and Hove, very few areas of coastal shingle retain natural vegetation. The 2009 biodiversity audit of the city recorded just 0.8 ha of the habitat. These remaining fragments are nevertheless of high nature conservation value.

The Joint Nature Conservation Committee has defined three foreshore stability classes, based on the length of time over which the shingle is undisturbed by environmental factors:

- Where the shingle beach is stable from spring to autumn, the presence of the yellow horned-poppy *Glaucium flavum* and sea-kale *Crambe maritima*, all species that can tolerate periodic movement, is significant.
- If the beach is stable for more than 3 years, short-lived perennials can establish (e.g. *Glaucium flavum*, *Rumex crispus*, *Beta maritima*, *Silene vulgaris* ssp. *maritima*).
- On more stable shingle above this zone, where sea spray is blown over the shingle, plant communities with a high frequency of salt-tolerant species such as sea campion *Silene vulgaris* ssp. *maritima* occur. These may exist in a matrix with abundant lichens. These formations can progress to grasslands where *Arrhenatherum elatius*, *Festuca rubra* or *Agrostis stolonifera* are dominant and which are rich in herbs such as *Galium verum*, *Silene maritima*, *Vicia sativa*, *Lotus corniculatus* or *Centaurea nigra*. Where there is a greater saline influence, *Plantago maritima* may be common.

All sites which meet the following qualifying criteria should be selected as Local Wildlife Sites:

- Coastal vegetated shingle supporting 4 or more of the indicator species listed in Table 1.
- Designation may be supported by the presence of associated invertebrates, birds and mammals.

Table 1. local Indicator Species for Coastal Vegetated Shingle (from 'Common Standards Monitoring Guidance for Vegetated Coastal Shingle Habitats' Version August 2004, Joint Nature Conservation Committee).

<i>Atriplex glabriuscula</i> ,	maritime spear-leaved orache
<i>Atriplex laciniata</i>	frosted orache
<i>Atriplex prostrata</i>	spear leaved orache
<i>Beta vulgaris maritima</i> ,	sea beet
<i>Crambe maritima</i> ,	sea kale
<i>Galium aparine</i> ,	cleavers
<i>Glaucium flavum</i>	yellow-horned poppy
<i>Matricaria maritima</i> ,	sea mayweed
<i>Picris echioides</i>	bristley oxtongue
<i>Rumex crispus</i>	curled dock
<i>Silene uniflora</i>	sea campion

#### 4. HEDGEROWS

Brighton and Hove has remarkably few hedgerows. The landscape has been traditionally open and unenclosed for many centuries, particularly when compared with adjacent areas such as the High Weald. Nevertheless, hedgerows are nationally recognised as being of biodiversity importance and are included in the UK list of priority habitats. 'Important hedgerows' are also protected under the Hedgerow Regulations 1997.

Hedgerows can be of critical value both as linear habitats and as habitat corridors, supporting very large and diverse populations of flora and fauna, and providing an important linking function between other valuable habitats. For species such as



dormouse and great crested newts, and as foraging corridors for bats, hedgerows can be vital in maintaining habitat connectivity. This connectivity role can be particularly important in areas of lower species diversity e.g. agriculturally improved landscapes or urban environments.

All sites which meet the following selection criteria qualify for selection as Local Wildlife Sites:

All hedgerows consisting of:

- a boundary line of trees or shrubs over 20m long and less than 5m wide, where
- any gaps between the trees or shrub species are less than 20m wide and
- the hedge consists predominantly (i.e. 80% or more cover) of at least one woody UK native species.
- Designation may be supported by the presence of associated species.

This definition conforms with the UK BAP definition of the hedgerow priority habitat. Any bank, wall, ditch or tree within 2m of the centre of the hedgerow is considered to be part of the hedgerow habitat, as is the herbaceous vegetation within 2m of the centre of the hedgerow.

## 5. INTERTIDAL CHALK

The Intertidal chalk habitat is defined by the UK BAP as the gently-sloping intertidal platforms between the vertical chalk cliffs and the low water mark. They support a range of micro-habitats of biological importance.

In Brighton and Hove, intertidal chalk is confined to the coast between Brighton Marina and the eastern boundary of the city. This entire stretch of coast is designated a Site of Special Scientific Interest. The 2006 Defra guidance on Local Wildlife Sites specifically precludes 'double designation' of SSSI land as Local Wildlife Site, therefore this habitat is not included in the qualification criteria for Local Wildlife Sites in Brighton and Hove.

## 6. LOWLAND CALCAREOUS (CHALK) GRASSLAND

Unimproved calcareous grasslands are an internationally important habitat type with a stronghold on the South Downs. Brighton and Hove has an international responsibility to conserve remaining examples. The habitat includes a characteristic suit of species such as upright brome (*Bromus erectus*) and sheep's fescue (*Festuca ovina* agg.) together with characteristic herbs such as Wild Thyme (*Thymus polytrichus*), Rockrose (*Helianthemum nummularium*), Lady's Bedstraw (*Galium verum*), Fairy Flax (*Linum catharticum*), and Salad Burnet (*Sanguisorba minor*).

'Semi-improved' calcareous grassland includes those swards which have been degraded by agricultural management but which retain a range of calcareous specialist species and are still recognisably derived from calcareous grassland.

The 2009 Habitat Audit of Brighton and Hove identified just under 300 ha of calcareous grassland, although only a third of this can confidently be described as

'unimproved'. Most of the habitat is fragmented over small patches of 0.1 ha or more, on the steeper, less accessible slopes.

All sites which meet the following selection criteria qualify for selection as Local Wildlife Sites:

- All examples of unimproved or semi-improved calcareous grassland over 0.1 ha.
- Smaller areas (less than 0.1 ha) of species-rich calcareous grassland if they form an integral part of a larger complex of habitat mosaics or fulfil a strategic linking function.

To be defined as unimproved or semi-improved calcareous grassland, grasslands must have at least 8 species present from the list of species indicative of calcareous grasslands in Table 1.

**Table 1. Indicator Species for Calcareous Grasslands**

<b>Scientific Name</b>	<b>Common Name</b>
<i>Anacamptis pyramidalis</i>	pyramidal orchid
<i>Anthyllis vulneraria</i>	kidney vetch
<i>Asperula cynanchica</i>	squincywort
<i>Blackstonia perfoliata</i>	yellow-wort
<i>Brachypodium pinnatum</i>	tor grass
<i>Briza media</i>	quaking grass
<i>Bromopsis erecta</i>	upright brome
<i>Campanula rotundiflora</i>	harebell
<i>Carex flacca</i>	glaucous sedge
<i>Carlina vulgaris</i>	carline thistle
<i>Centaurea nigra</i>	common knapweed
<i>Centaurea scabiosa</i>	greater knapweed
<i>Centaureum erythraea</i>	common centuary
<i>Cirsium acaule</i>	dwarf thistle
<i>Clinopodium acinos</i>	basil thyme
<i>Clinopodium vulgare</i>	wild basil
<i>Crepis biennis</i>	rough hawk's-beard
<i>Daucus carota</i>	wild carrot
<i>Echium vulgare</i>	viper's-bugloss
<i>Festuca ovina agg.</i>	sheep's fescue
<i>Galium verum</i>	lady's bedstraw
<i>Gentianella amarella</i>	autumn gentian
<i>Helianthemum nummularium</i>	common rock-rose
<i>Hippocrepis comosa</i>	horseshoe vetch
<i>Hypericum perforatum</i>	perforate St John's-Wort
<i>Inula conyzae</i>	ploughman's spikenard
<i>Knautia arvensis</i>	field scabious
<i>Leontodon hispidus</i>	rough hawkbit
<i>Leontodon saxatilis</i>	lesser hawkbit
<i>Linum catharticum</i>	fairy flax
<i>Listera ovata</i>	twayblade
<i>Lotus corniculatus</i>	common bird's-foot trefoil
<i>Medicago lupulina</i>	black medick
<i>Ononis repens</i>	common restharrow

<i>Ophrys apifera</i>	bee orchid
<i>Orchis mascula</i>	early-purple orchid
<i>Origanum vulgare</i>	wild majoram
<i>Pastinaca sativa</i>	wild parsnip
<i>Pilosella officinarum</i>	mouse-ear hawkweed
<i>Pimpinella saxifraga</i>	burnet-saxifrage
<i>Plantago media</i>	hoary plantain
<i>Polygala vulgaris</i>	common milkwort
<i>Primula veris</i>	cowslip
<i>Ranunculus bulbosus</i>	bulbous buttercup
<i>Sanguisorba minor</i>	salad burnet
<i>Scabiosa columbaria</i>	small scabious
<i>Spiranthes spiralis</i>	autumn lady's-tresses
<i>Thymus polytrichus</i>	wild thyme
<i>Thymus pulegioides</i>	large thyme
<i>Trisetum flavescens</i>	yellow oat-grass
<i>Viola hirta</i>	hairy violet
<i>Viola riviniana</i>	common dog-violet

## 7. LOWLAND MIXED DECIDUOUS WOODLAND

The UK BAP definition of the Lowland mixed deciduous woodland priority habitat type includes woodland growing on the full range of soil conditions, from very acidic to base-rich, and takes in most semi-natural woodland in the UK.

The total amount of all woodland (ancient and recent) within Brighton and Hove, as recorded in the Forestry Commission's National Inventory of Woodland and Trees (2000), is 305 ha. This is slightly more than the amount recorded by the 2009 Biodiversity Audit of the city, which records just under 280 ha. The difference is probably attributable to differences in distinguishing mature scrub from woodland. The Biodiversity Audit figure amounts to 3.4% of the area of the city, which is below the England average of 8.4%<sup>3</sup>.

All sites which meet the following selection criteria qualify for selection as Local Wildlife Sites:

- All semi-natural woodlands over 0.25 ha which although not ancient, support at least one semi-natural ancient woodland plant species (see Table 1)
- Smaller areas (less than 0.25 ha) of semi-natural woodland if they either particularly species-rich, or if they form part of a larger site, or complex of habitats, or fulfil a strategic linking function.

**Table 1: semi-natural ancient woodland plant species in Brighton and Hove<sup>4</sup>**

Holly	<i>Ilex aquifolium</i>
Bluebell	<i>Hyacinthoides non-scripta</i>
Field Maple	<i>Acer campestre</i>
Box	<i>Buxus sempervirens</i>

<sup>3</sup> See 'A revision of the Ancient Woodland Inventory for Brighton and Hove. Report and Inventory Maps, January 2010' Weald and Downs Ancient Woodland Inventory.

Red Currant	<i>Ribes rubrum</i>
Sanicle	<i>Sanicula europaea</i>
Early Dog-Violet	<i>Viola reichenbachiana</i>
Yellow Archangel	<i>Lamium galeobdolon</i>
Hart's-Tongue	<i>Phyllitis scolopendrium</i>
Wood-Sedge	<i>Carex sylvatica</i>
Spurge-Laurel	<i>Daphne laureola</i>
Primrose	<i>Primula vulgaris</i>
Ramsons	<i>Allium ursinum</i>
Hairy Brome	<i>Bromopsis ramosa</i>
Pendulous Sedge	<i>Carex pendula</i>
Daffodil	<i>Narcissus pseudonarcissus</i>
Black Bryony	<i>Tamus communis</i>
Wood Speedwell	<i>Veronica montana</i>
Stinking Iris	<i>Iris foetidissima</i>
Wood Melick	<i>Melica uniflora</i>
Hard Shield-Fern	<i>Polystichum aculeatum</i>
Barren Strawberry	<i>Potentilla sterilis</i>
Butcher's-Broom	<i>Ruscus aculeatus</i>
Wood Anemone	<i>Anemone nemorosa</i>
Hornbeam	<i>Carpinus betulus</i>
Alder Buckthorn	<i>Frangula alnus</i>
Three-Nerved Sandwort	<i>Moehringia trinervia</i>
Wood-Sorrel	<i>Oxalis acetosella</i>
Wild Cherry	<i>Prunus avium</i>
Pignut	<i>Conopodium majus</i>
Midland Hawthorn	<i>Crataegus laevigata</i>
Scaly Male Fern	<i>Dryopteris affinis</i>
Wood Spurge	<i>Euphorbia amygdaloides</i>
Creeping Soft-Grass	<i>Holcus mollis</i>
Early-Purple Orchid	<i>Orchis mascula</i>
Solomon's-Seal	<i>Polygonatum multiflorum</i>
Soft Shield-Fern	<i>Polystichum setiferum</i>
Goldilocks Buttercup	<i>Ranunculus auricomus</i>
Field Rose	<i>Rosa arvensis</i>
Guelder-Rose	<i>Viburnum opulus</i>

## 8. MARITIME CLIFF AND SLOPE

The Maritime cliff and slope habitat is defined by the UK BAP as the sloping to vertical faces on the coastline where a break in slope is formed by slippage and/or coastal erosion.

In Brighton and Hove, Maritime cliff and slope is confined to the coast between Brighton Marina and the eastern boundary of the city. This entire stretch of coast is designated a Site of Special Scientific Interest. The 2006 Defra guidance on Local Wildlife Sites specifically precludes 'double designation' of SSSI land as Local Wildlife Site, therefore this habitat is not included in the qualification criteria for Local Wildlife Sites in Brighton and Hove.

## 9. OPEN MOSAIC HABITATS ON PREVIOUSLY DEVELOPED LAND

According to the UK BAP, this habitat comprises mosaics of bare ground with, typically, very early pioneer communities on skeletal substrates, more established open grasslands, usually dominated by fine-leaved grasses with many herbs, areas of bare ground, scrub and patches of other habitats such as heathland, swamp, ephemeral pools and inundation grasslands.

These are generally primary successions, and as such unusual in the British landscape, especially the lowlands. In Brighton and Hove, where there has been considerable development pressure on 'brownfield' land for many years, the biodiversity audit did not identify any surviving examples of this habitat.

All sites which meet the following selection criteria qualify for selection as Local Wildlife Sites:

- All examples of Open Mosaic Habitats on Previously Developed Land

## 10. PONDS

In the Brighton and Hove context, ponds, for the purpose of UK BAP priority habitat classification, are defined as permanent and seasonal standing water bodies up to 2 ha in extent, with species of high conservation importance: Ponds supporting Red Data Book species, UK BAP species, species fully protected under the Wildlife and Countryside Act Schedule 5 and 8, Habitats Directive Annex II species, a Nationally Scarce wetland plant species, or three Nationally Scarce aquatic invertebrate species.

The Brighton & Hove biodiversity audit identified just over 4 hectares of open, freshwater habitat, all of it divided into small ponds normally under 50m<sup>2</sup>. Some of these may qualify as UK BAP priority habitat.

All sites which meet the following selection criteria qualify for selection as Local Wildlife Sites:

- All examples of ponds which have largely unmodified, semi-natural beds and banks, good water quality and/or which support good aquatic, emergent or bank side plant communities.
- All ponds which qualify under individual relevant Species Criteria (flora, invertebrates, amphibians, or birds). See Annex 2 for more information.
- All less valuable ponds if they occur as integral features of a larger mosaic of habitats.

'Good' aquatic, emergent or bank side communities are taken in this context to mean a range of aquatic plant species dominated by combinations of characteristic native species.

Designation will include an appropriate area of terrestrial habitat around any selected ponds and lakes, which would be sufficient to protect the water body from acute pollution incidents or disturbance. This should typically be a minimum of 10m wide from the water's edge.

## 11. SALINE LAGOONS

According to the UK BAP, lagoons in the UK are essentially bodies, natural or artificial, of salinewater partially separated from the adjacent sea. They retain a proportion of their seawater at low tide and may develop as brackish, full saline or hyper-saline water bodies. Lagoons can contain a variety of substrata, often soft sediments which in turn may support tasselweeds and stoneworts as well as filamentous green and brown algae. In addition lagoons contain invertebrates rarely found elsewhere.

In Brighton and Hove, the inner harbour of Brighton Marina could be described as an artificial lagoon. It is separated from the open sea by a sea lock.

All sites which meet the following selection criteria qualify for selection as Local Wildlife Sites:

- All examples of saline lagoons where the presence of characteristic saline lagoon species can be demonstrated.

## 12. TRADITIONAL ORCHARDS

According to the UK BAP, traditional orchards comprise open-grown trees set in herbaceous vegetation. The species composition of the trees comprises primarily the family Rosaceae but include plantings for nuts, principally hazelnuts, but also walnuts. Orchards are usually small scale and cultivated for fruit and nut production, usually achieved through activities such as grafting and pruning. Grazing or cutting of herbaceous vegetation is also integral to orchard management.

Traditional orchards are hotspots for biodiversity in the countryside, supporting a wide range of wildlife and containing UK BAP priority habitats and species, as well as an array of Nationally Rare and Nationally Scarce species.

There are hardly any traditional orchards remaining in Brighton and Hove. The biodiversity audit identifies just 0.6 ha.

All sites which meet the following selection criteria qualify for selection as Local Wildlife Sites:

- All examples of traditional orchards where the presence of characteristic orchard species can be demonstrated.

## 13. SCRUB COMMUNITIES

Scrub communities are not included in the UKBAP list of priority habitats, but they can nevertheless be an important biodiversity resource. In Brighton and Hove scrub occupies over 181 ha.

The most important scrub for biodiversity is normally that which supports a mix of native woody species with good structural diversity (a varied range of shrub ages and canopy heights, mature trees, the presence of small rides and clearings, good gradations in edge habitats and varied ground flora).

Most scrub communities comprise common and ubiquitous woody species and are widespread in the UK. However, scrub habitats are extremely variable in form and composition, and even some of the common communities may be exceptionally rich in species. Larger stands may also support nationally protected species such as dormouse (*Muscardinus avellanarius*), as is the case in Brighton and Hove.

Large stands of gorse (*Ulex europaeus*), support a distinctive faunal community, with characteristic species such as stonechat, linnets and Dartford warbler, along with a high invertebrate diversity. The complex rigid structure of gorse bushes is such that it is a noted habitat for spiders, for instance and green hairstreak butterflies are often associated with stands of gorse.

In addition to the above, scrub communities may also be selected where they form linking habitats between other features of interest, or form a peripheral part of another habitat of interest (i.e. as part of a mosaic site), or under the species criteria, where they support species of significance.

All sites which meet the following selection criteria qualify for selection as Local Wildlife Sites:

- Structurally diverse and species-rich mixed scrub sites of 1 ha or more in size.
- Significant stands of gorse (over 1 ha in size) and/or stands which support key associated species
- Smaller stands of scrub (including less species-rich areas) if they form an integral part of a larger site or complex habitat mosaics or fulfil a strategic linking function.

#### **14. MOSAIC HABITATS**

Mosaic sites, comprising of complex mixtures of semi-natural habitats, are not included in the UK BAP list of priority habitats but are nevertheless of biodiversity importance in Brighton and Hove.

Local Wildlife Sites with mosaic habitats will support a variety of different habitat types, of which the largest or most species-rich would often qualify on individual habitat criteria. Smaller areas of habitat, and/or areas of less species-rich habitat, will be included where they form an integral part of the ecological functioning of the site, fulfil a linking role or represent important habitat areas for key species.

Parks and golf courses can support mosaics of comparatively undisturbed habitats. As a general rule, it is desirable to aggregate individually qualifying habitats together into single sites where the habitats are adjacent and/or intimately associated.

All sites which meet the following selection criteria qualify for selection as Local Wildlife Sites:

- Any coherent site, which comprises at least 3 distinct habitat types, where at least 1 habitat is approaching SINC selection status in its own right, providing that improved, species-poor or degraded elements of

low or negligible conservation interest do not form a significant proportion (>25%) of the total area.

- The designation of mosaic SINC's may be supported by the presence of associated species.

## **Annex 2: Species Criteria for selecting Local Wildlife Sites**

All sites which meet the following selection criteria qualify for selection as Local Wildlife Sites:

For all the species listed in Table 3 (below):

All sites supporting breeding (or probable breeding) populations, or that are critical for nesting, hibernating, foraging, territorial or other significant use, will be selected.

Table 3 comprises species recorded in Brighton and Hove which are listed under Section 42 of the Natural Environment and Rural Communities Act 2006 or which are statutorily protected.

### **Invertebrates:**

- Any site which supports a species of invertebrate listed in the UK Red Data Book
- Any site which supports an important assemblage or population(s) of 'Nationally Scarce' species

### **Fungi**

- All grassland sites supporting 6 or more species of waxcap (*Hygrocybe* spp.)

This threshold has been set using the conservation value for regional importance of 6 – 10 *Hygrocybe* species during a single visit per site (ref. Boertmann, David (1995) *The genus Hygrocybe. Fungi of Northern Europe 1.*)

### **Table 3: Important Species Brighton and Hove**

Table 3 is a list of local species which are also listed in BAPs either nationally or in Sussex, or which have special legal protection. It does not include all locally occurring species listed in the national Red Data Books or which may otherwise be regarded as of local nature conservation value.

Latin Name	English Name
<i>Helianthemum oelandicum</i> subsp. <i>levigatum</i>	a rock-rose



<i>Vipera berus</i>	Adder
<i>Lysandra bellargus</i>	Adonis Blue butterfly
<i>Stercorarius parasiticus</i>	Arctic Skua
<i>Ennomos quercinaria</i>	August Thorn
<i>Eugnorisma glareosa</i>	Autumnal Rustic
<i>Meles meles</i>	Badger
<i>Puffinus mauretanicus</i>	Balearic Shearwater
<i>Tyto alba</i>	Barn Owl
<i>Trichopteryx polycommata</i>	Barred Tooth-striped
<i>Clinopodium acinos</i>	Basil Thyme
<i>Vespertilionidae and Rhinolophidae</i>	Bats – all species
<i>Agrochola lychnidis</i>	Beaded Chestnut
<i>Agrotera nemoralis</i>	Beautiful Pearl
<i>Myotis bechsteinii</i>	Bechstein's Bat
<i>Entoloma bloxamii</i>	Big Blue Pinkgill
<i>Botaurus stellaris</i>	Bittern
<i>Phoenicurus ochruros</i>	Black Redstart
<i>Formica pratensis</i>	Black-backed Meadow Ant
<i>Gavia arctica</i>	Black-throated Diver
<i>Timandra comae</i>	Blood-Vein
<i>Lycia hirtaria</i>	Brindled Beauty
<i>Valerianella rimosa</i>	Broad-fruited Cornsalad
<i>Melanchra pisi</i>	Broom Moth
<i>Thecla betulae</i>	Brown Hairstreak
<i>Lepus europaeus</i>	Brown Hare
<i>Plecotus auritus</i>	Brown Long-eared Bat
<i>Bombus humilis</i>	Brown-banded Carder Bee
<i>Agrochola litura</i>	Brown-spot Pinion
<i>Spilosoma luteum</i>	Buff Ermine
<i>Pyrrhula pyrrhula subsp. pileata</i>	Bullfinch
<i>Orchis ustulata</i>	Burnt Orchid
<i>Atethmia centrigo</i>	Centre-barred Sallow
<i>Scotopteryx bipunctaria</i>	Chalk Carpet
<i>Scotopteryx bipunctaria subsp. cretata</i>	Chalk Carpet
<i>Euphrasia pseudokernerii</i>	Chalk Eyebright
<i>Eurysa douglasi</i>	Chalk Planthopper
<i>Chamaemelum nobile</i>	Chamomile
<i>Tyria jacobaeae</i>	Cinnabar
<i>Zootoca vivipara</i>	Common Lizard
<i>Melanitta nigra</i>	Common Scoter
<i>Bufo bufo</i>	Common Toad
<i>Emberiza calandra subsp. calandra/clanceyi</i>	Corn Bunting
<i>Ranunculus arvensis</i>	Corn Buttercup
<i>Galium tricorntutum</i>	Corn Cleavers
<i>Centaurea cyanus</i>	Cornflower
<i>Celaena leucostigma</i>	Crescent
<i>Melampyrum cristatum</i>	Crested Cow-wheat
<i>Cuculus canorus</i>	Cuckoo
<i>Numenius arquata</i>	Curlew
<i>Weissia condensa</i>	Curly Beardless-moss
<i>Lampronia capitella</i>	Currant-shoot Borer
<i>Xanthorhoe ferrugata</i>	Dark-barred Twin-spot Carpet
<i>Aporophyla lutulenta</i>	Deep-brown Dart
<i>Erynnis tages subsp. tages</i>	Dingy Skipper
<i>Carex divisa</i>	Divided Sedge
<i>Melanchra persicariae</i>	Dot Moth
<i>Prunella modularis subsp. occidentalis</i>	Dunnock (Hedge Accentor)

<i>Apamea remissa</i>	Dusky Brocade
<i>Ennomos fuscantaria</i>	Dusky Thorn
<i>Amphipoea oculea</i>	Ear Moth
<i>Gentianella anglica</i>	Early Gentian
<i>Ophrys sphegodes</i>	Early Spider Orchid
<i>Ulmus procera</i>	English Elm <sup>4</sup>
<i>Caprimulgus europaeus</i>	European Nightjar
<i>Arvicola terrestris</i>	European Water Vole
<i>Tholera decimalis</i>	Feathered Gothic
<i>Tephrosia integrifolia</i> subsp. <i>integrifolia</i>	Field Fleawort
<i>Gentianella campestris</i>	Field Gentian
<i>Diloba caeruleocephala</i>	Figure of Eight
<i>Minuartia hybrida</i>	Fine-leaved Sandwort
<i>Regulus ignicapillus</i>	Firecrest
<i>Blysmus compressus</i>	Flat-sedge
<i>Luronium natans</i>	Floating Water-plantain
<i>Agrochola helvola</i>	Flounced Chestnut
<i>Ophrys insectifera</i>	Fly Orchid
<i>Adscita statices</i>	Forester
<i>Coeloglossum viride</i>	Frog Orchid
<i>Epirrhoe galiata</i>	Galium Carpet
<i>Euxoa nigricans</i>	Garden Dart
<i>Arctia caja</i>	Garden Tiger
<i>Hepialus humuli</i>	Ghost Moth
<i>Teloschistes flavicans</i>	Golden Hair-lichen
<i>Muscari neglectum</i>	Grape-hyacinth
<i>Natrix natrix</i>	Grass Snake
<i>Locustella naevia</i>	Grasshopper Warbler
<i>Hipparchia semele</i>	Grayling
<i>Triturus cristatus</i>	Great Crested Newt
<i>Rhinolophus ferrumequinum</i>	Greater Horseshoe Bat
<i>Allophyes oxyacanthae</i>	Green-brindled Crescent
<i>Acronicta psi</i>	Grey Dagger
<i>Perdix perdix</i>	Grey Partridge
<i>Pyrgus malvae</i>	Grizzled Skipper
<i>Micromys minutus</i>	Harvest Mouse
<i>Coccothraustes coccothraustes</i>	Hawfinch
<i>Muscardinus avellanarius</i>	Hazel Dormouse
<i>Erinaceus europaeus</i>	Hedgehog
<i>Larus argentatus</i> subsp. <i>argenteus</i>	Herring Gull
<i>Argynnis adippe</i>	High Brown Fritillary
<i>Nemophora fasciella</i>	Horehound Long-horn
<i>Asilus crabroniformis</i>	Hornet robberfly
<i>Passer domesticus</i>	House Sparrow
<i>Doros profuges</i>	Hoverfly
<i>Juniperus communis</i>	Juniper
<i>Acronicta rumicis</i>	Knot Grass
<i>Malacosoma neustria</i>	Lackey
<i>Vanellus vanellus</i>	Lapwing
<i>Rhinolophus hipposideros</i>	Lesser Horseshoe Bat
<i>Carduelis cabaret</i>	Lesser Redpoll
<i>Carduelis cannabina</i> subsp. <i>autochthona/cannabina</i>	Linnet
<i>Anisus vorticulus</i>	Little Whirlpool Ramshorn Snail

<sup>4</sup> English Elm is not listed in the UK BAP or Sussex BAP but is protected in Brighton and Hove under The Dutch Elm Disease (Local Authorities) (Amendment) Order 1988

<i>Aceras anthropophorum</i>	Man Orchid
<i>Stellaria palustris</i>	Marsh Stitchwort
<i>Salvia pratensis</i>	Meadow Clary
<i>Ophonus (Metoponus) melletii</i>	Mellet's Downy-back
<i>Brachylomia viminalis</i>	Minor Shoulder-knot
<i>Caradrina morpheus</i>	Mottled Rustic
<i>Amphipyra tragopoginis</i>	Mouse Moth
<i>Scopula marginepunctata</i>	Mullein Wave
<i>Herminium monorchis</i>	Musk Orchid
<i>Cephalanthera longifolia</i>	Narrow-leaved Helleborine
<i>Nyctalus noctula</i>	Noctule Bat
<i>Watsonalla binaria</i>	Oak Hook-tip
<i>Trichiura crataegi</i>	Pale Eggar
<i>Boloria euphrosyne</i>	Pearl-bordered Fritillary
<i>Mentha pulegium</i>	Pennyroyal
<i>Falco peregrinus</i>	Peregrine
<i>Adonis annua</i>	Pheasant's-eye
<i>Orthosia gracilis</i>	Powdered Quaker
<i>Melanthia procellata</i>	Pretty Chalk Carpet
<i>Salsola kali subsp. kali</i>	Prickly Saltwort
<i>Galeopsis angustifolia</i>	Red Hemp-nettle
<i>Centaurea calcitrapa</i>	Red Star-thistle
<i>Lanius collurio</i>	Red-backed Shrike
<i>Emberiza schoeniclus</i>	Reed Bunting
<i>Turdus torquatus</i>	Ring Ouzel
<i>Sterna dougallii</i>	Roseate Tern
<i>Mesoligia literosa</i>	Rosy Minor
<i>Hydraecia micacea</i>	Rosy Rustic
<i>Hoplodrina blanda</i>	Rustic
<i>Xanthia icteritia</i>	Sallow
<i>Squamarina lentigera</i>	Scaly Breck-lichen
<i>Aythya marila</i>	Scaup
<i>Fulgensia fulgens</i>	Scrambled-egg Lichen
<i>Hordeum marinum</i>	Sea Barley
<i>Polygonum maritimum</i>	Sea Knotgrass
<i>Ennomos erosaria</i>	September Thorn
<i>Ophonus (Metoponus) laticollis</i>	Set-aside Downy-back
<i>Scotopteryx chenopodiata</i>	Shaded Broad-bar
<i>Scandix pecten-veneris</i>	Shepherd's-needle
<i>Segmentina nitida</i>	Shining Ram's-horn Snail
<i>Hippocampus hippocampus</i>	Short-snouted Seahorse
<i>Mythimna comma</i>	Shoulder-striped Wainscot
<i>Alauda arvensis subsp. arvensis</i>	Sky Lark
<i>Syncopacma albipalpella</i>	Slate Sober
<i>Galium pumilum</i>	Slender Bedstraw
<i>Bupleurum tenuissimum</i>	Slender Hare's-ear
<i>Anguis fragilis</i>	Slow-worm
<i>Cupido minimus</i>	Small Blue
<i>Hemistola chrysoprasaria</i>	Small Emerald
<i>Coenonympha pamphilus</i>	Small Heath
<i>Boloria selene</i>	Small Pearl-bordered Fritillary
<i>Ecliptopera silaceata</i>	Small Phoenix
<i>Diarsia rubi</i>	Small Square-spot
<i>Turdus philomelos subsp. clarkei</i>	Song Thrush
<i>Pipistrellus pygmaeus</i>	Soprano Pipstrelle (55 kHz)
<i>Eulithis mellinata</i>	Spinach
<i>Muscicapa striata</i>	Spotted Flycatcher
<i>Asteroscopus sphinx</i>	Sprawler

<i>Torilis arvensis</i>	Spreading Hedge-parsley
<i>Lucanus cervus</i>	Stag Beetle
<i>Sturnus vulgaris subsp. vulgaris</i>	Starling
<i>Buellia asterella</i>	Starry Breck-lichen
<i>Weissia sterilis</i>	Sterile Beardless-moss
<i>Crepis foetida</i>	Stinking Hawk's-beard
<i>Ribautodelphax imitans</i>	Tall Fescue Planthopper
<i>Bupleurum rotundifolium</i>	Thorow-wax
<i>Arabis glabra</i>	Tower Mustard
<i>Heridium erinaceum</i>	Tree Hedgehog fungus
<i>Anthus trivialis</i>	Tree Pipit
<i>Passer montanus</i>	Tree Sparrow
<i>Carex vulpina</i>	True Fox-sedge
<i>Oenanthe fistulosa</i>	Tubular Water-dropwort
<i>Streptopelia turtur</i>	Turtle Dove
<i>Chenopodium urbicum</i>	Upright Goosefoot
<i>Lasiommata megera</i>	Wall
<i>Decticus verrucivorus</i>	Wart-biter
<i>Barbastella barbastellus</i>	Western Barbastelle
<i>Limenitis camilla</i>	White Admiral
<i>Spilosoma lubricipeda</i>	White Ermine
<i>Cephalanthera damasonium</i>	White Helleborine
<i>Satyrium w-album</i>	White-letter Hairstreak
<i>Euxoa tritici</i>	White-line Dart
<i>Phylloscopus sibilatrix</i>	Wood Warbler
<i>Leptidea sinapis</i>	Wood White
<i>Lullula arborea</i>	Woodlark
<i>Jynx torquilla</i>	Wryneck
<i>Cicendia filiformis</i>	Yellow Centaury
<i>Pogonus luridipennis</i>	Yellow Pogonus
<i>Emberiza citrinella</i>	Yellowhammer

# DRAFT BRIGHTON & HOVE LOCAL WILDLIFE SITE SURVEY FORM

## KEY

RECORDER no.:

To be completed by surveyor (with supplementary comments from selection panel)	To be completed by landowner/occupier	To be completed by selection panel
--	--	---------------------------------------

### SECTION A: SUMMARY

Survey Number	1	Grid Reference	TQ 242,091	Name & address of site contact person:	
Survey photographs (show locations & directions taken on map overleaf)					

**SECTION A: SUMMARY** *(Cont/d . . .)*

Target Notes	Habitat Map	Target Notes

**Typicalness** *(this feature is descriptive only)*

Comment on the overall quality of the habitats on site in the Brighton & Hove context

Comments from landowner / occupier

**SECTION B: MANDATORY CRITERIA**

**Habitat Size & Diversity**

Habitat type + total area	Notable species present	Meets test? Y / N + Comments
Habitat type +	Notable species present	Meets test? Y / N +

total area		Comments
Comments from landowner / occupier		



### Rare or Exceptional Features

Species name	Comments	Meets test? Y / N + Comments
Comments from landowner / occupier		

**SECTION C: CONTRIBUTORY CRITERIA**

**Rare or exceptional features** *(cont/d)*

Describe any unusual nature conservation features (other than species):	Meets test Y / N + Comments
Comments from landowner / occupier	

**Naturalness**

Edge habitats (describe)	Habitat structure (describe)	Alien v. native species (describe)	Meets test Y / N + Comments
Comments from landowner / occupier			

## Fragility

Comment on any species / habitats under threat on the site	Meets test Y / N + Comments
Comments from landowner / occupier	

## Recorded History / Cultural Associations

Comment on any notable site history	Meets test Y / N + Comments
Comments from landowner / occupier	

## Connectivity within the landscape

Type of nearest habitat	Distance away	Designation?	Meets test Y / N + Comments
Comments from landowner / occupier			

**Appreciation of nature**

Describe any use by the public for quiet recreation:	Meets test Y / N + Comments
Comments from landowner / occupier	

**Ecosystem Services**

Describe any ecosystem services benefits which may be offered by the site	Meets test Y / N + Comments
Comments from landowner / occupier	

**SECTION D: QUALIFYING CRITERIA FOR POTENTIAL LNR DECLARATION**

**Value for learning**

Describe any educational visits from local schools, clubs, etc., or the potential for this?	Meets test for LNR? Y / N Comments
Comments from landowner / occupier	

## Management

Is the site subject to a conservation management agreement or is there realistic potential for doing so (the mechanism for delivery must be described)?	Meets test for LNR? Y / N Comments
Comments from landowner / occupier	

Any additional comments from landowner / occupier
---

SURVEY CARRIED OUT BY :

DATE :

**SECTION C: MANAGEMENT RECOMMENDATIONS**

Management Objectives				Additional recommendations from the selection panel
Feature	Maintenance targets	Restoration Targets	Enhancement Targets	
Comments from landowner / occupier				

## Brighton & Hove Local Wildlife Sites

### Central Area Selection Panel: Summary of Decisions

Met: 7 - 9.30pm, Tuesday 23rd July 2013, Brighton Town Hall

In Attendance

Matthew Thomas Council Ecologist (chair)  
Lindsay Cattanach Parks Ranger (notes)  
CiCi Blumstein  
Peter Hodge  
Chris Edwards  
David Alderton  
Denise Friend  
Jane Brinkley  
Kirstie Lynch  
Martin Robinson Friends of Benfield Valley  
Mr P Grimstone  
Mrs P Grimstone  
Mrs Susan Kidd  
Mr Howard Kidd

Site Number	Site Name	Decision
48	Bramble Rise	No
49	Braypool	No
50	Hogtrough Bottom	Treat as if designated
51	Scrub at Mill Road Roundabout	No
52	Black Lion Copse	No
53	Withdean Park Copse	Yes
54	Surrenden Field Copse	Yes
55	Oak Close Copse	No
56	The Preston Twins	No
56a	Surrenden Crescent & Surrenden Road	Yes
57	Parkmore Terrace Railside	Treat as if designated
58	Argyle Road Copse	Treat as if designated
59	Brighton Station North	Yes
60	Brighton Station South	Destroyed



<b>Site Number</b>	<b>Site Name</b>	<b>Decision</b>
61	Howard Terrace Slopes	No
62	Whittingehame Gardens Copse	No
63	Dorothy Stringer Wildlife Area	Yes + proposed LNR
64	Patcham Court Farm	Treat as if designated
65	Patcham Court Field	No
66	Braeside Avenue Scrub	Yes
67	Ewe Bottom	Yes
68	Standean Cottage Down	Yes
69	Deep Bottom & The Chattri	Yes
70	Ditchling Road SW	Yes + proposed LNR
71	London Road Station	Yes
72	Roundhill Copse	Treat as if designated
73	Elmore Road Scrub	No
74	Beaufort Terrace	Treat as if designated
75	Burstead Woods	Yes + proposed LNR
76	Hollingbury Wood	Yes + proposed LNR
77	Hollingbury Golf Course	Yes + proposed LNR
78	Queensdown	Yes + proposed LNR
79	Wild Park	No
80	39 Acres	No
81	Ditchling Road	Yes + proposed LNR part only
82	Hollingbury Industrial Estate	Yes + proposed LNR
83	Coldean Lane Slopes	Treat as if designated
84	Crespin Way Copse	Yes
85	Watts Bank	Yes
86	Hodshrove Wood	Yes
87	North Bevendean Down	Yes + proposed LNR

<b>Site Number</b>	<b>Site Name</b>	<b>Decision</b>
88	Heath Hill Down	Yes + proposed LNR
89	South Bevendean Down	Yes
90	Bevendean Horse Paddocks	Yes + proposed LNR
91	Brown Loaf Farm	No
92	Bevendean Farm Slope	Yes
93	Falmer Hill	Yes
94	Land off Ashurst Road	Yes

## Brighton & Hove Local Wildlife Sites

### East Area Selection Panel: Summary of Decisions

**Met: 7 - 9.30pm, Tuesday 9th July, Saltdean Community Centre**

#### In Attendance

Matthew Thomas Council Ecologist (chair)  
Paul Gorringe Parks Ranger (notes)  
Ben Rainbow Ecologist, West Sussex CC  
Bob Webzell Chair Rottingdean Parish Council  
CiCi Blumstein  
Dave Bangs  
James Farrell Environment Agency, Building Green (to site no. 111 only)  
Jane Hawkins Friends of Sheepcote Valley  
John Horsfield  
Laura Brook Sussex Wildlife Trust  
Nicola Yuill  
Peter Hodge  
Pru Gridley  
Ann Barker  
Geoff Dann

Site Number	Site Name	Decision
95	Westlain Plantation	Yes
96	Wollards Field	No
97	Land at Coldean Lane	Yes + LNR
98	Stanmer Park South	Yes + LNR
99	Stanmer Park North	Yes + LNR
100	Stanmer Park East	Yes + LNR
101	Lots Pond to the Ridge	Yes + LNR
102	Cemeteries off Bear Road	Yes + LNR
103	Stevenson Road Quarry	Yes
104	Land at Sea-Saw Way	Yes + LNR
105	Maderia Drive Green Wall	Yes
106	Volks Railway East	Yes + LNR

<b>Site Number</b>	<b>Site Name</b>	<b>Decision</b>
107	Volks Railway Central	Yes + LNR
108	Volks Railway West	Yes + LNR
109	Beach at Black Rock	Yes + LNR
110	Brighton Marina	Yes
111	Cliff Road Paddock	Yes
112	Cliff Corner	Yes
113	Sheepcote Valley N	Yes + LNR
114	Sheepcote Valley S	Yes + LNR
115	East Brighton Golf Course	Yes
116	Mount Pleasant	Yes
117	Ovingdean Church to Cattle Hill	Yes
118	Roedean School Slope	Yes
119	Copse at Woodingdean Cemetary	Yes
120	Land at 54 Crescent Drive North	No
121	Land at Bexhill Road	Yes
122	Field East of Woodingdean	Yes
122a	Field E of Ravenswood Drive	Yes - using 1998 data
123	Scrub East of Woodingdean	Yes
124	Bazehill Road Reservoir	No
125	Happy Valley Downland	Yes
126	Abinger Road Paddock	Yes
127	Old Cottage Paddocks	Yes
128	Meadow Vale Paddocks	No
129	Long Hill	Treat as if Yes
130	Ovingdean Copse	No
131	Ovingdean Hall	Treat as if Yes
132	Rottingdean Pond	Yes
133	Whiteway Lane	Yes

<b>Site Number</b>	<b>Site Name</b>	<b>Decision</b>
134	High Hill	Treat as if Yes
135	Balsdean Down	Yes
136	Balsdean Down East	Yes
137	Balsdean Downland North	Yes
138	Saltdean Down	Yes
139	Saltdean Vale	Yes
140	Coombe Meadow	Yes
141	Saltdean Chalk Pit	Yes - using 1998 data
142	Westfield Avenue	Yes

## Brighton & Hove Local Wildlife Sites

### West Area Selection Panel: Summary of Decisions

**Met: 7 - 9.00pm, Tuesday 17th July, Portslade Town Hall**

#### In Attendance

Matthew Thomas Council Ecologist (chair)  
Chantelle Hoppe Parks Ranger (notes)  
Paul Gorringe Parks Ranger  
Ben Rainbow Ecologist, West Sussex CC  
CiCi Blumstein  
Laura Brook Sussex Wildlife Trust  
Peter Hodge  
Pru Gridley Friends of Stanmer Park  
Christine Fitzgerald Friends of Waterhall  
Colin Leeves Keep The Ridge Green  
Martin Robinson Friends of Benfield Valley  
Maureen Holt Keep The Ridge Green  
Rosemary Dowd Keep The Ridge Green

Site Number	Site Name	Decision
1	Mile Oak Farm Bank	No
2	Cockroost Hill West	Yes
3	Cockroost Hill East	Yes
4	Mile Oak Fields	Yes
5	Southwick Hill East	Yes
6	Sidehill Scrub	Yes
7	Portslade North Slope	No
8	Mile Oak Farm Earthwork	No
9	Loxdale Centre	No
10	Emmaus and St Nicholas	Yes
11	Foredown allotments	Yes
12	New Barn Farm Slope	Yes
13	Basin Road South	Yes

<b>Site Number</b>	<b>Site Name</b>	<b>Decision</b>
14	North Benfield Valley	Yes
15	Benfield Valley Central	Yes
16	Dyke Trail	Yes
17	St Helens Churchyard	Yes
18	Dyke Trail South	No
19	Benfield Valley South	Yes
20	Round Hill	Yes
21	Mill View Hospital	No
22	St Leonards Churchyard	Yes
23	Alexandra Court	No
24	Toad's Hole Valley	Yes to east facing slope; valley should be treated as if designated
25	Dyke Road Strip	Yes
26	Waterhall Golf South	Yes + pLNR
27	Waterhall Golf Central	Yes + pLNR
28	Waterhall Golf North	Yes + pLNR
29	Waterhall Farm Slope	Yes
30	Hove Park Reservoir	Yes
31	Casterbridge Farm	Yes
32	Sweet Hill Scrub	Yes
33	Waterhall Valley	Yes + pLNR
34	Sweet Hill West	Yes
35	Waterhall East	Yes
36	Green Ridge & Coney Woods	Yes + pLNR
37	Three Cornered Copse	Yes
38	Engineerium Grounds	Should be treated as if designated
39	St Andrew Old Church	No

<b>Site Number</b>	<b>Site Name</b>	<b>Decision</b>
40	Park Royal & High School	Yes
41	Cardinal Newman School	Yes
42	Highcroft Villas	Yes
43	Millers Road	No
44	Withdean Road Woods	No
45	Station Road	Yes
46	Tongdean Rise	No
47	Redhill Sports Ground	Should be treated as if designated



## **Sussex Local Wildlife Site Selection Criteria**

These criteria are applicable to East Sussex and West Sussex administrative areas only.

Sites of Nature Conservation Importance (SNCI), a term defined locally, shall be referred to as Local Wildlife Sites (LWS) in this guidance, a term used across England and in Government legislation and guidance.

The recommended selection, modification or deletion of LWS will be agreed by a panel of local experts, the LWS Technical Panel, in line with the criteria listed below, with reference to the standard selection criteria in the Local Guidance sites guidance 2006, listed in appendix 1.

The LWS Selection Panel may include suitably qualified or experienced representatives from:

- East Sussex County Council
- West Sussex County Council
- Sussex Wildlife Trust
- Sussex Biodiversity Record Centre
- District or Borough Councils
- Natural England

And where appropriate, suitably qualified or experienced:

- Local nature conservation experts
- Member of the Sussex Botanical Recording Society
- Member of the Sussex Ornithological Society
- Member of other local nature conservation/recording bodies

It should be noted that the ecological value of a site is determined by many variables and there will always be the need for 'best professional judgement' in site selection. Selection should be based on reliable, up to date information.

Accordingly, these criteria should be updated periodically to reflect changes in:

- Distributions of habitats and species
- Local and national knowledge and understanding
- Biological recording and data availability
- Nature conservation in general

### **Criteria**

These LWS site selection criteria have been created with reference to the following local and national nature conservation policies and guidance:

- Local - Sussex Rare Species Inventory
- Local - Sussex Biodiversity Action Plan Habitat and the evolving Sussex LNP biodiversity strategy
- National - Biodiversity 2020
- National – Natural Environment and Rural Communities Act 2006, Section 41, Habitats and Species of Principal Importance in England
- National - Ancient Woodland, as identified by County and District Ancient Woodland Inventories

- National – Local Sites Guidance (Defra, 2006)

The following criteria have been set by which the designation, modification or deletion of LWSs will be judged. Any site which meets the following list of criteria is eligible for selection as a LWS:

### **Habitat Criteria**

#### **CH1 Sussex Biodiversity Action Plan Habitat**

“All areas of Sussex Biodiversity Action Plan habitat shall be eligible for selection.”

#### **CH2 Habitat of Principal Importance in England**

“All significant<sup>(1)</sup> areas of habitat of principal importance in England, as defined in section 41 of the Natural Environment and Rural Communities (NERC) Act 2006, shall be eligible for selection.”

#### **CH4 Sand Rock Exposures**

“All significant areas of sand rock exposures and associated habitat shall be eligible for selection.”

#### **CH6 Mosaic Habitats**

Sites will be eligible for selection where:

**(a)** “A site comprising two or more sub-habitats, each of which just fails to be selected as a Site within its own main habitat criterion group or on species grounds.”

Or

**(b)** “Where a site that would not necessarily warrant selection on its own provides a significant and clearly identifiable extension to the habitat of an adjacent or nearby LWS or other statutory designed wildlife site (e.g. SSSI).

Consideration to other designated sites or land of nature conservation value in the vicinity will also be considered.”

#### **CH7 Wildlife Corridors**

“Where two or more LWSs are linked by additional habitat of a type that would allow the dispersal and interchange of species within each site, adding significant conservation value to the habitat or species, then these corridors will be eligible for selection with the LWS or potential LWS sites.”

#### **CH8 Site expansion**

“Areas of potential habitat in close proximity to existing habitat and receiving appropriate management may be eligible for selection.”

### **Species Criteria**

#### **CS1 Species Criteria**

“Sites supporting significant populations or relic populations of internationally, nationally or locally rare species, or species assemblages, will be eligible for selection as a LWS, or may contribute towards eligibility for consideration under the habitat criteria. For these purposes, ‘supporting’ may be defined as sites that either directly support breeding populations of species or provide a significant ecological function for the life cycle of that species, including resident or migratory species to the Country or region.

Reference will be given to the following information:

- Sussex Rare Species Inventory
- Sussex Biodiversity Action Plan and evolving Sussex LNP biodiversity strategy
- Natural Environment and Rural Communities Act 2006, Section 41, Habitats and Species of Principal Importance in England“

(1) ‘Significant’ areas are those capable of providing a substantive contribution to the conservation of Habitat of Principal Importance in England, and/or sustaining viable species populations comprising Habitats of Principal Importance in England, and/or providing a genetic resource for species comprising Habitats of Principal Importance in England.

## **Bibliography**

Local Sites Guidance on their Identification, Selection and Management, DEFRA 2006

Natural Environment and Rural Communities (NERC) Act 2006, Section 41, Habitats and Species of Principal Importance in England

Local Wildlife Site Selection Criteria, Essex Local Wildlife Sites Partnership, 2010

Guidance for the Selection of Sites of Nature Conservation Importance (SNCIs) in Surrey, Surrey Wildlife Trust, 2008

## **Appendix 1**

Extract from: “Local Sites Guidance on their Identification, Selection and Management, DEFRA 2006”:

### Reference Criteria for the Selection of Local Sites

#### Size or Extent

The ability of a site to support a species depends, in part, upon its extent. The requirements of many species of animal for minimal areas for foraging and territories for breeding may preclude their survival within smaller areas of otherwise suitable habitat. The same may also be true of certain plant species where the long-term viability of populations may require a minimal extent of

habitat free from adverse environmental influence, allowing for turnover within local populations. Although, for mobile species, including many birds, mosaics of different habitat features or elements at the wider landscape scale are essential, the presence of individual blocks of a particular habitat type of a minimal size can nevertheless be critical.

Where the interest of a site is an active natural process, such as shifting tidal flats, the site boundary should encompass the area of active process as well as any adjacent area to which the process will imminently spread.

Although larger sites can be critically important for supporting viable populations of certain species, smaller sites can also be important where species are able to use them as ‘patches’ of a larger habitat resource dispersed across the landscape. Small sites may also be the only locally available patches of accessible natural greenspace offering opportunities for the appreciation of nature.

#### Diversity

A key principle of nature conservation is to sustain the diversity of wildlife, habitats, geological and geomorphological features. The former includes maintaining genetic

diversity within populations of animals and plants as well as the diversity of species and habitats. Some habitats are characteristically more species-rich than others. For example, unimproved calcareous grassland is considerably richer in plant species than heathland. However, each habitat type is characterised by its own range of species. Conserving the diversity that these different habitats represent, and the diversity of their respective floras and faunas, means effectively conserving the integrity of these contrasting environments, one richer in plant species, and the other poorer.

Conserving diversity at a landscape scale can involve maintaining habitats at different stages of ecological succession. This may mean arresting succession of a particular patch of habitat at an intermediate stage or allowing sufficient patches of habitat to proceed through succession at staggered intervals such that at any one time different patches are at different stages of succession.

England contains a wide diversity of geological features and landforms from a range of eras within a relatively small area. Individual sites and features together contribute to this diversity. The sites in a Local Sites system should seek to reflect the diversity of features that characterise the geology of the area in question as together they provide the basis for understanding the processes that have built and shaped the resource over time.

#### Naturalness

Human activities past and present have had such an impact that even those parts of the landscape that seem least modified are now more usually described as 'semi-natural'. In this context, the concept of 'naturalness' is probably better considered not as the absence of human intervention or legacy within a site but the degree to which a site supports natural features or demonstrates active or past natural processes. Eroding coasts are dynamic features dominated by natural processes. In contrast, quarry exposures revealing rock strata betray past natural processes within what is a landscape feature clearly of human, industrial origin. Both significantly demonstrate 'naturalness' by revealing past or present natural process. Within urban areas, natural processes of colonisation and succession can transform previously developed land into seemingly natural vegetation. But it is often the early stages of such natural recolonisation that, though less apparent, are more significant for the presence of rare or scarce species of conservation importance. Therefore, naturalness should be considered as much in terms of process as the presence of 'natural' features.

#### Rare or Exceptional feature

This is perhaps the most self evident of the criteria. The local loss of a rare species or habitat may result directly in the reduction in its wider geographical range. For species that are rare, local populations may represent an important part of the total species gene pool. The loss of a local population may result in the irreversible loss of genetic diversity, local races or subspecies and ultimately of species themselves. Exceptional geological features if lost are equally irreplaceable; the environments and processes that created them may no longer exist.

#### Fragility

Although some habitats and geological features are stable over long periods, others are more prone to change and so are at greater risk of being lost. Such change might be the successional change that occurs naturally or may be due to the direct or indirect impact of

other influences or human activities. This may extend to include the influence of climate change. For example, some invertebrates require grasslands with short open turf with a good proportion of exposed soil. The cessation, or even the reduction in the intensity of grazing, could lead to the loss of species in relatively short periods of time. Similarly many sites such as peatlands are susceptible to erosion and damage from trampling and unmanaged access. Active conservation management is important in maintaining the condition of sites, countering adverse impacts and preventing the loss of ephemeral populations and habitats through successional change. Fragility should not be construed as susceptibility to development. It is the intrinsic sensitivity of habitats or features that should be considered rather than the site's likelihood to face development. Different types of habitat and geological feature have different sensitivities to change and damage. In contrast, many woodlands are comparatively robust and may require little management to conserve their nature conservation interest over long periods.

Fragility is relevant to evaluation of sites because Local Site designation could aid the conservation of fragile habitats and features through prioritisation of land management resources.

### Typicalness

Generally, Local Sites will not be typical of the landscapes in which they are found; their designation is likely to reflect the fact that they are special in some way. Rather, their value lies in them exemplifying a type of habitat, geological feature, or a population of a species, that is characteristic of the natural components of the landscape in which they are found.

Wildlife habitats and geological features play an important role in helping define a 'sense of place' or local distinctiveness. They represent the 'natural character' of an area, especially where this has been lost or eroded from the wider landscape. Similarly, sites may exemplify natural processes past or present whether geological or biological. In this way, Local Sites are likely to typify the best of the natural environment of an area.

### Recorded history and cultural associations

Past investigation or recording of a site can add greatly to its value for understanding processes and change in the natural environment. Many sites also have links to historic events or have literary or other associations in art. Besides revealing environmental change (or stasis) over time such recording or portrayal can also reveal changes in perception of the natural environment and the economic value that it has been ascribed at different times. Because the natural environment has been extensively shaped and influenced by human activity, the natural features that we have inherited and which provide important components of regional and local distinctiveness also represent important parts of our cultural heritage. A good example of this is the relationship between local geology and building stone. Not only are many towns and cities dominated by buildings made of locally quarried stone, but the former quarries from which such stone came are commonly sites of local value for their geological or ecological interest.

Because Britain has played an important role in the history of Earth Science, many sites are of significance as the places where scientific concepts were first demonstrated.

### Connectivity within the landscape

Besides being of intrinsic interest themselves and directly supporting wildlife within their boundaries, Local Sites also have an important role in supporting populations of species within the wider landscape. Such species may not depend on any single site or piece of habitat but rather require a habitat resource which is comprised of numerous patches which though dispersed, are accessible and are potentially parts of a functional network. Individual sites need to be considered in terms of the contribution they make to such networks; not simply the quantity of habitat they provide, but its geographical position. The quality of habitat and the nature of the surrounding matrix are also extremely pertinent considerations.

In considering the geological interests of potential sites, a relevant factor would be the degree to which their interest features contribute to understanding landscape-scale geological or geomorphological processes, past and present.

#### Value for Appreciation of Nature

The scale and cumulative impact of human intervention in the landscape, plus social changes, such as the decline in land based employment, have had a combined effect in reducing people's contact with nature and a high quality natural environment. There is growing evidence that the positive associations that people have with the concept of nature is reflected in benefits to people's well being. Whilst there is an established history of recognising the intrinsic appeal or aesthetic value of nature manifest in particular places, the amenity and spiritual benefits provided by contact with nature has often been considered a subordinate concern. Sites which are important for the conservation of rare species or exceptional geological features, are rich in biodiversity or typify the natural character of an area will often be additionally important for providing people with the chance to experience and enjoy local wildlife and geology. In populous areas that are poorer in high quality natural environment, sites of lesser intrinsic ecological or geological interest may still be of substantive nature conservation value for the opportunities they provide for the appreciation of nature.

Although the absence of rights of access to sites can clearly affect the opportunities for experiencing, and close enjoyment of, the interest features within them; their protection and enhancement within the landscape can offer significant visual appreciation from neighbouring or more distant locations.

#### Value for learning

The value of statutory designated sites such as nature reserves, in providing opportunities for research and investigation into ecology and geology has been a long established and accepted principle in nature conservation in Britain. Today, there is an equal need to provide sites for local educational use to enable people of all ages to learn about and better understand the natural world around them.

Some sites may offer particular local opportunities for controlled research, investigation or experimental work. The ease with which people can reach a site, the safety of access and for use of the site, and the rights or permission for using the site will all be relevant considerations.

Site	Survey name & ref	Brighton & Hove Criteria 2013													Sussex LWS Criteria 2017										Notes	Recommendation
		Size	Diversity	Rare/Exc Feature	Naturalness	Fragility	Recorded history	Connectivity	Appreciation	Ecosystem Services	Value for Learning	Management	Overall	CH1 Sussex BAP Habitat	CH2 S41 Habitat	CH4 Sand rock exposures	CH6 Mosaic habitats	CH7 Wildlife Corridors	CH8 Site expansion	CS1 Species	Panel decision 2013	Panel review 2017				
BH02 Mile Oak Fields (within & adj. NP)	04 - Mile Oak Fields (October 2011)	y	y	y	y	y	n	n	n	y	n	n	y	n	n	n	y	n	n	y	y	y	y	Habitats within eastern extension meet selection criteria.	Retain LWS with boundary extension to east.	
BH34 Sheepcote Valley (within & adj. NP)	113 - Sheepcote Valley North (July 2012); 114 - Sheepcote Valley South (September 2012); 115 - East Brighton Golf Course (October 2011)	y	y	y	y	y	y	y	y	y	y	y	y	y	y	n	y	y	y	y	y	y	y	The existing site was covered by three surveys, although two went beyond the boundaries of the site. The proposed extensions to the west incorporate a mosaic of grassland and scrub, including old chalk downland. The site as a whole is botanically diverse and is known as a good site to see birds on migration. The species-rich wet grassland is unique in Brighton & Hove on this scale. The proposed extension is therefore justified. The mapping indicates some minor deletions around the boundaries, although, with the exception of a deletion on the western boundary to remove part of the football ground, it is considered these simply reflect the boundaries of the surveys rather than a lack of interest.	Retain LWS with extension to west and small deletion on western boundary to exclude football practice pitch.	
BH35 Westlain Plantation Hog Plantation (within & adj. NP)	95 - Westlain Plantation and Westlain Belt (October 2012)	y	y	y	y	y	y	y	y	y	y	y	y	y	y	n	y	y	y	y	y	y	y	Some minor boundary extensions to incorporate areas of woodland; justified. Minor deletions seem to reflect the difference between the existing site boundary and the survey boundaries rather than interest therefore not justified. Boundary with the adjacent LNR should remain the same as existing to avoid overlap.	Retain LWS with minor boundary extensions.	
BH36 Tenant Lain and Moon's Gate Wood (within & adj. NP)	101 - Lots Pond to The Ridge, Stanmer (no survey)	y	y	y	?	?	?	?	?	?	?	?	y	y	y	n	n	y	n	?	y	y	No survey data is available for this site. However, from an assessment of aerial photos, the existing citation and local biodiversity records, the site comprises deciduous woodland (BAP/S41) some of which is designated as ancient semi-natural woodland, and as such, it meets both B&H and Sussex criteria and should be retained.	Retain LWS with no boundary changes.		
BH86 Bevendean Horse Paddocks (within and adj NP)	90 - Bevendean Horse Paddocks (October 2011)	y	y	y	n	y	n	y	y	y	n	n	y	y	y	n	y	y	y	y	y	y	y	A mosaic of habitats supporting a number of notable species, including the S41 species Hornet Robberfly and the largest density of Common Frog known in the City. Much of the site is designated as an LNR. However, the proposed boundary of the LWS includes some areas outside the LNR which merit recognition and protection because of the species and habitats they support. As such, it is recommended that the site is also designated as a LWS.	Designate as LWS.	

BH87 Land at Coldean Lane (within & adj. NP)	97 - Land at Coldean Lane (November 2011)	y	y	y	y	y	y	y	y	y	y	y	y	y	n	y	y	y	y	y	The site includes ancient woodland, ex-arable land and semi-improved chalk grassland and supports a number of protected and notable species.	Designate as LWS.	
Burstead Wood (within & adj. NP)	75 - Burstead Wood (October 2011)	y	y	y	n	n	n	y	y	y	y	y	y	y	n	n	y	n	y	y	y	The site comprises a comparatively large area of mature, secondary woodland on the urban fringe. The woodland habitat and species it supports meet both B&H and Sussex criteria. The survey form states that the improved grassland with scattered scrub should be excluded from this site and incorporated into another LWS, with just the woodland being designated as a LWS. However, the boundaries of the habitat is unclear and the majority of the woodland is included within Wild Park LNR. It is therefore the view of the 2017 panel that the site is sufficiently recognised and protected.	Do not designate as site sufficiently protected through LNR status.
Hollingbury Golf Course (within & adj NP)	77 - Hollingbury Golf Course (June 2011)	y	y	y	y	y	y	y	y	y	y	y	y	y	n	y	y	y	y	y	y	Although the majority of the site is improved grassland, the golf course retains areas of rough with relict chalk grassland plants and scrub. The Hill Form supports larger areas of chalk grassland and perhaps the largest area of gorse scrub in Brighton & Hove. The site supports a number of notable species. The whole site is designated as a LNR (Wild Park). The view of the 2017 panel is therefore that the value of the site is already sufficiently recognised and protected.	Do not designate as site sufficiently protected through LNR status.
Hollingbury Wood (within & adj NP)	76 - Hollingbury Wood (October 2011)	y	y	y	n	y	h	y	y	y	y	y	y	y	n	y	y	n	y	y	y	Mature linear woodland supporting notable species. As such, the site meets B&H and Sussex criteria. However, the site is already designated as a LNR (Wild Park). The view of the 2017 panel is therefore that the value of the site is already sufficiently recognised and protected.	Do not designate as site sufficiently protected through LNR status.
Queensdown (within & adj NP)	78 - Queensdown (May 2013)	y	y	y	n	y	n	y	y	y	y	y	y	y	n	y	y	y	y	y	y	An area of woodland and pasture which supports a number of notable and protected species. As such, the site meets both B&H and Sussex criteria. The site is already designated as a LNR (Wild Park).	Do not designate as site sufficiently protected through LNR status.



Site	Survey name & ref (date of survey)	Brighton & Hove Criteria 2013											Sussex LWS Criteria 2017											Notes	Recommendation	Actions following CPP2 consultation	
		Size	Diversity	Rare/Exc Feature	Naturalness	Fragility	Recorded history	Connectivity	Appreciation	Ecosystem Services	Value for Learning	Management	Overall	CH1 Sussex BAP Habitat	CH2 S41 Habitat	CH4 Sand rock exposures	CH6 Mosaic habitats	CH7 Wildlife Corridors	CH8 Site expansion	CS1 Species	Panel decision 2013	Panel review 2017					
BH07 Emmaus Gardens & St Nicholas	10 - Emmaus & St Nicholas (October 2010)	y	y	y	n	n	y	y	y	y	y	y	y	n	n	n	y	y	n	y	y	y	y	y	The existing site is in two parts. Boundary of eastern section remains unchanged. Proposed extension to north of western section to take in improved grassland with scattered trees which provide opportunities for bats and nesting birds. Forms part of mosaic of habitats and matches OS Mastermap. Proposed deletions/adjustments to boundary of western section to take out buildings and hardstanding. Also proposes deletion of tree line on southern boundary but this deletion is not justified.	Retain LWS with boundary extension to north west and deletions of buildings and hard standing. Retain tree line along southern boundary of western section within site boundary.	n/a
BH09 Benfield Valley	15 - Benfield Valley Central (October 2010); 19 - Benfield Valley South (October 2010)	y	y	y	n	y	y	y	y	y	y	y	y	y	n	y	y	n	y	y	y	y	y	y	Existing site in four parts. In northern section of site, proposed extension at northwestern end to include area of chalk grassland (covered in survey) which is species rich and contributes to mosaic of habitats; therefore should be included. Some minor adjustments to boundary to match OS Mastermap. Proposed deletions to remove car parks/buildings. In southern section of site, proposed extension to south (to take in areas of improved grassland plus some small areas of mixed woodland and dense native shrub) cannot be justified because of low species richness.	Retain LWS with boundary extension to north west but retain southern boundary as is. Amend boundary to match Mastermap and to delete hard standing.	n/a
BH10 Basin Road South	13 - Basin Road South (October 2010)	y	y	y	n	y	n	n	n	y	n	n	y	y	y	n	n	n	n	y	y	y	y	Existing boundary supports best example of vegetated shingle habitat on site.	Retain LWS with no boundary changes.	Site surveyed March 2018 following representations from landowner that site does not support coastal vegetated shingle. Site found to support coastal vegetated shingle (S41/BAP habitat) and coastal grassland. Recommendation to retain with no boundary changes supported by LWS Technical Panel 15/03/19.	
BH12 Toad's Hole Valley	24 - Toad's Hole Valley (June 2011)	y	y	y	y	y	n	y	y	y	y	n	y	y	n	y	y	n	y	y	y	y	y	Minor boundary changes to match OS Mastermap.	Retain LWS with minor boundary changes to correct anomalies.	n/a	
BH15 Three Cornered Copse	37 - Three Cornered Copse (July 2011)	y	y	y	y	n	n	y	y	y	y	y	y	y	n	y	y	n	y	y	y	y	y	Possibly a very small extension proposed at southern tip but unclear from survey sheet and insufficient justification provided.	Retain LWS with no boundary changes.		
BH17 Bramble Rise Copse	48 - Bramble Rise (June 2011)	n	?	?	n	n	?	y	y	y	?	y	y	y	n	n	n	n	y	n	y	n	y	From information available, only reason it was declined by 2013 panel was small size. The site meets Sussex criteria (supporting a Sussex BAP and S41 habitat + notable species). As such, and given context within urban area, 2017 panel recommends retention.	Retain LWS with no boundary changes.		
BH20 Tivoli Copse & Railway Woodland	44 - Withdean Road Woods (July 2011); 45 - Station Road (July 2011)	y	y	y	n	y	n	y	y	y	n	y	y	y	n	n	y	n	y	y/n	y	y	y	2013 panel considered two halves of existing site separately (site split into two surveys). It is the view of the 2017 panel that the site functions as a whole. Unclear from the summary sheets whether the surveys covered the whole site, therefore boundary changes cannot be justified.	Retain LWS with no boundary changes.		
BH21 Foredown Allotments	11 - Foredown Allotments (October 2010)	y	y	y	y	y	y	n	y	y	y	y	y	y	n	y	y	y	y	y	y	y	y	No proposed changes to boundary and survey covered whole site.	Retain LWS with no boundary changes.	n/a	
BH22 Oakdene Southwick Hill (adj NP)	05 - Southwick Hill East (September 2011)	y	y	y	y	y	n	y	n	y	n	n	y	y	n	n	n	y	y	y	y	y	y	Some minor amendments to north west and north east boundaries to match OS Mastermap. Species-poor improved grassland at north of site does not meet selection criteria but may provide buffer between the scrub and the houses. Proposed extension to south eastern tip to include the whole length of the tree/scrub line; justified as an extension of a habitat within the existing site. Proposed extension to south western tip to include area of tall ruderal vegetation; inclusion is justified as it forms part of the habitat mosaic. Proposed deletion to remove quarry works; justified. Proposed extension into gardens of numbers 279-283 Mile Oak Road; not justified.	Retain LWS with minor amendments to north western and north eastern boundaries to match OS Mastermap, and extensions to southern boundary.	n/a	

BH25 Brighton Station (Brighton Greenway)	57 - Parkmore Terrace Rainside (no survey); 58 - Argyle Road Copse (September 2012); 59 - Brighton Station North (July 2011); 60 - Brighton Station South (no survey)	y	y	y	n	y	y	y	y	y	y	y	y	n	n	y	n	n	y/n	y	Current site split into three sections. Covered by four surveys, none of which completely matched the existing site. The 2013 panel proposed that the southern third should be deleted as at the time of the survey, it had been completely cleared in preparation for development. However, the planning permission included conditions for the restoration of the site, and a semi-natural planting scheme has since been agreed and put in place. Proposed extensions to the central section to include deciduous woodland on the rainside; justified as an area of BAP/S41 habitat forming part of a habitat mosaic. Permission was not given to survey the northern third of the site; as such there is no justification for deletion and that part of the site should be treated as if designated. It is the view of the 2017 panel that the site should be retained as a linear site, as it meets criteria for connectivity and is an important site within urban environment.	Retain LWS with extensions to central section to include deciduous woodland. Site should be renamed as "Brighton Greenway".	n/a
BH26 Hollingbury Industrial Estate (adj NP)	82 - Hollingbury Industrial Estate (various 2008 - 2010)	y	y	y	n	y	n	y	y	y	y	y	y	n	y	n	y	y	y	y	Proposed deletion to north western boundary to remove area of buildings and hard standing; justified. Proposed extensions to north, west and south west to include areas of chalk grassland (BAP/S41 habitat) and semi-improved grassland with trees (contributing to habitat mosaic).	Retain LWS with deletion to remove buildings and hard standing, and extensions to north, west and south west.	n/a
BH27 Crespin Way	84 - Crespin Way (August 2011)	y	y	y	n	n	y	y	y	y	y	y	y	n	n	y	n	y	y	y	Survey undertaken in 2011 used to inform 2013 review only covered northern half of the existing site. As there is no information available for the southern half, and therefore no justification for its deletion, this should be retained as is. The survey extended north to incorporate the whole of the woodland (BAP/S41 habitat).	Retain LWS with extension to north.	n/a
BH28 Brighton University	85 - Watts Bank (August 2011)	y	y	y	y	y	n	y	y	y	y	y	y	n	y	y	n	y	y	y	Proposed extensions to north western boundary to include dense native scrub with stinking hellebore (nationally scarce) and to south and east to include tall ruderal vegetation including remnant chalk grassland (BAP/S41) and short patchy vegetation which supports invertebrates and reptiles. Proposed extensions therefore justified. Small deletion to eastern boundary to remove buildings and hard standing.	Retain LWS with minor deletion to remove buildings and hard standing and extensions to include north and south east.	n/a
BH29 Volk's Railway	106 - Volks Railway East (August 2011); 107 - Volks Railway Central (June 2011); 108 - Volks Railway West (July 2011)	y	y	y	n	y	y	y	y	y	y	y	y	n	n	n	n	y	y	y	Some deletions proposed to remove buildings and areas of hard standing; justified. Proposed extension in middle section to include "conservation mound" created through Yellowwave development and increased extent of shingle vegetation (can be seen on aerial photographs). Given importance of vegetated shingle as a habitat and its scarcity within Brighton and Hove, the extension is justified.	Retain LWS with minor deletions to remove buildings and hard standing and extension to central section.	n/a
BH30 Woodvale Extra-mural and Downs Cemeteries	102 - Cemeteries off Bear Road (September 2011)	y	y	y	n	y	y	y	y	y	y	y	y	n	y	y	n	y	y	y	Survey undertaken in 2011 used to inform 2013 review only covered part of the existing site. As there is no information available for the rest of the site, and therefore no justification for its deletion, the boundary of the site should be retained as is.	Retain LWS with no boundary changes.	n/a
BH31 Black Rock Beach	109 - Beach at Black Rock (August 2011)	y	y	y	y	y	y	y	y	y	y	y	y	n	n	y	n	y	y	y	Survey undertaken in 2011 used to inform 2013 review only covered part of the existing site. As there is no information available for the rest of the site, and therefore no justification for its deletion, the boundary of the site should be retained as is. Also, bare shingle seaward of the vegetation is needed to maintain the shingle at the rear of the beach and bare shingle is an integral part of the vegetated shingle habitat.	Retain LWS with no boundary changes.	n/a
BH32 Wilson Avenue Whitehawk	104 - Land at Sea-saw Way (August 2011)	y	y	y	y	y	n	y	y	y	n	n	y	n	n	y	y	y	y	y	Minor extension to north not covered by survey and appears to be a mapping anomaly.	Retain LWS with no boundary changes.	n/a
BH33 Brighton Marina	110 - Brighton Marina (May 2013)	y	y	y	?	y	y	y	y	y	y	?	y	y	y	n	n	y	y	y	Survey data used to inform 2013 panel did not cover the whole of the site. As such there is no justification for a change in the boundary.	Retain LWS with no boundary changes.	n/a
BH42 Ovingdean School Grounds	131 - Ovingdean School (no survey)	y	y	y	?	?	?	?	?	?	?	?	y	y	y	n	y	y	n	y	No survey data is available for this site. However, from an assessment of aerial photos, the existing citation and local biodiversity records, the site comprises a mosaic of habitats, including woodland, and supports protected species. As such, it meets both B&H and Sussex criteria and should be retained.	Retain LWS with no boundary changes.	Landowner submitted ecological report with representation requesting removal of the playing fields from the designation. Whilst the eastern part of the site is ecologically rich and merits continued designation, the playing fields do not meet the selection criteria and there is no evidence that they are significantly used by badgers for foraging and commuting. This view was supported by the Technical Panel via email exchange. Site retained with boundary amendment to exclude playing fields.

BH43 Wanderdown Road Open Space	129 - Long Hill (no survey but planning appeal 2016)	y	y	y	y	y	n	y	n	y	n	y	y	y	y	n	y	y	n	y	y	y	Access for survey was denied at the time of the 2013 review. However, surveys have been carried out since then in relation to a planning application, and the site retains the features for which it was originally designated, including chalk grassland and woodland (both BAP/S41), chalk scrub and protected species. There are existing planning conditions to manage the site for nature conservation. These surveys also highlighted the presence of species rich chalk grassland on the road verge and recommended extension of the boundary to cover that habitat. The existing site should therefore be retained as it is with an extension to the northern boundary to include the road verge.	Retain LWS with boundary extension to north.	n/a
BH60 St Helen's Churchyard	17 - St Helens Churchyard (October 2010)	y	y	y	n	y	y	n	y	y	y	y	y	n	n	n	y	y	n	y	y	y	The site retains the interest for which it was originally designated.	Retain LWS with no boundary changes.	n/a
BH62 Honeysett	120 - Land at 54 Crescent Drive North (December 2012)	n	n	y	?	y	n	y	y	y	n	y	y	y	y	n	n	n	n	y	n	y	The site failed to meet B&H criteria due to its small size. However, it meets Sussex criteria (presence of badger sett) and is of importance within urban context.	Retain LWS with no boundary changes.	n/a

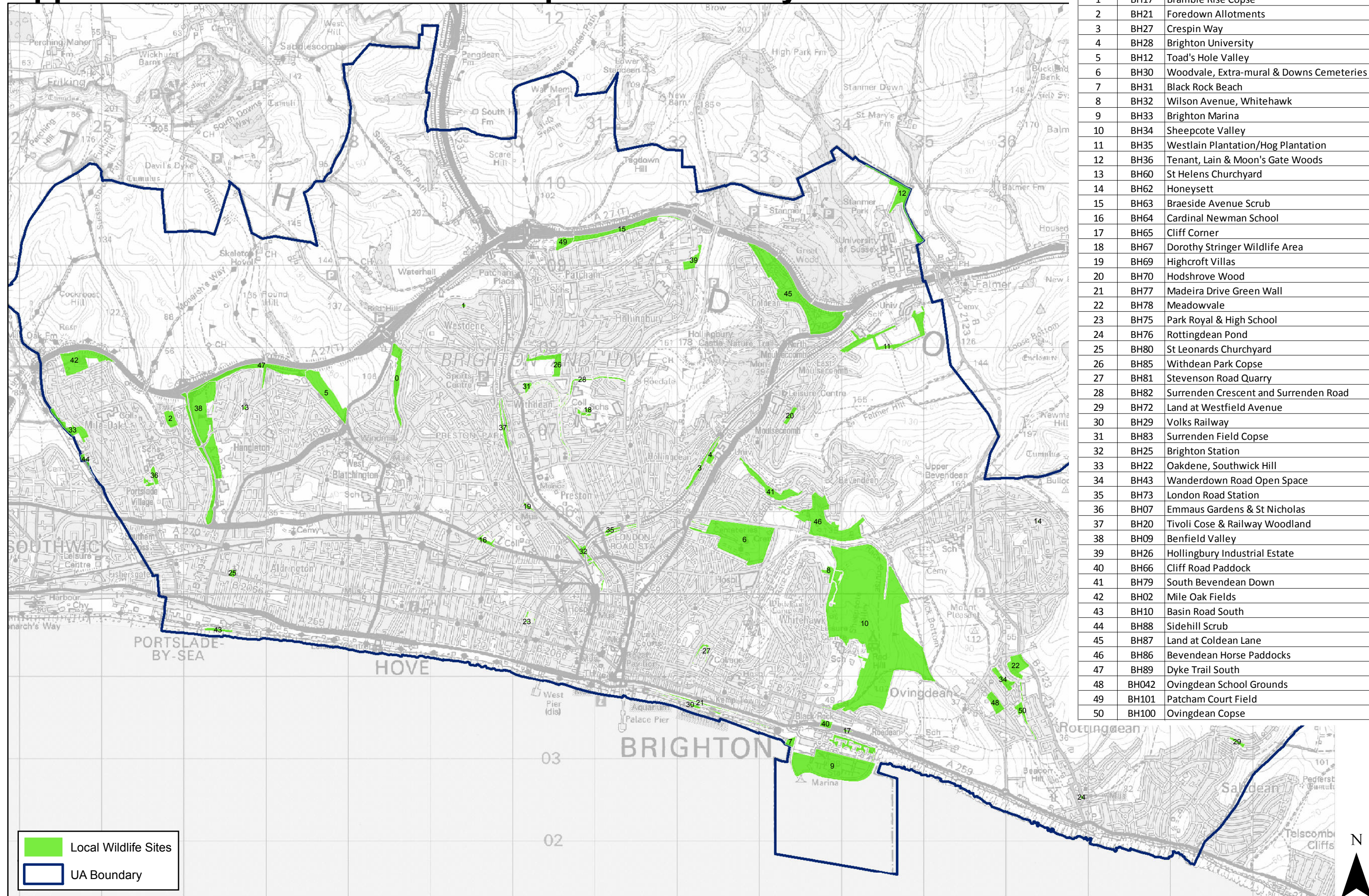
Site	Survey name & ref	Brighton & Hove Criteria 2013											Sussex LWS Criteria 2017											Notes	Recommendation	Actions following CPP2 consultation	
		Size	Diversity	Rare/Exc Feature	Naturalness	Fragility	Recorded history	Connectivity	Appreciation	Ecosystem Services	Value for Learning	Management	Overall	CH1 Sussex BAP Habitat	CH2 S41 Habitat	CH4 Sand rock exposures	CH6 Mosaic habitats	CH7 Wildlife Corridors	CH8 Site expansion	CS1 Species	Panel decision 2013	Panel review 2017					
BH63 Braeside Avenue Scrub	66 - Braeside Avenue Scrub (August 2011)	y	y	y	y	n	n	y	y	y	n	y	y	n	y	n	n	n	y	y	n	y	y	y	Area surveyed overlapped with Ladies Mile Open Space LNR at eastern end.	Designate as LWS but amend eastern boundary to avoid overlap with adjacent LNR.	n/a
BH64 Cardinal Newman School	41 - Cardinal Newman School (October 2011)	y	y	y	y	n	n	n	y	y	y	n	y	y	n	n	n	n	y	n	y	y	y	y	Site is particularly important in the urban context.	Designate as LWS.	n/a
BH65 Cliff Corner	112 - Cliff Corner (August 2011)	y	y	?	n	n	n	y	y	y	y	y	y	y	y	n	n	n	y	n	n	y	y	y	A corner of species-rich chalk grassland (BAP/S41) under active management for nature conservation, with free public access.	Designate as LWS.	n/a
BH66 Cliff Road Paddock	111 - Cliff Road Paddock (September 2010/October 2011)	y	y	y	y	y	y	y	n	y	y	y	y	y	y	n	y	y	n	y	y	y	y	y	Unmanaged rough coastal grassland (including chalk grassland (BAP/S41)) is unusual in B&H. Site supports significant population of common lizards (protected under WCA).	Designate as LWS.	n/a
BH67 Dorothy Stringer Wildlife Area	63 - Dorothy Stringer Wildlife Area (various 2008 - 2011)	y	y	y	y	n	y	y	y	y	y	y	y	y	n	y	y	y	y	y	y	y	y	y	Boundary mapped to match survey boundary. Recommend extension to incorporate habitat around the dew pond rather than just the dew pond itself.	Designate as LWS with the boundary to include a buffer around the dew pond.	n/a
BH69 Highcroft Villas	42 - Highcroft Villas (July 2011)	y	y	y	y	y	n	n	y	y	n	n	y	y	n	n	n	n	y	n	y	y	y	y	The presence of semi-natural, flower-rich grassland in central Brighton is unusual.	Designate as LWS.	n/a
BH70 Hodshrove Wood	86 - Hodshrove Wood (November 2011)	y	y	y	y	?	y	n	y	y	y	y	y	y	n	y	n	n	n	y	y	y	y	y	High community value.	Designate as LWS.	n/a
BH72 Land at Westfield Avenue	142 - Westfield Avenue (July 2012)	y	y	y	y	y	y	y	y	y	y	y	y	y	n	n	n	n	n	y	y	y	y	y	Species-rich chalk grassland (BAP/S41) habitat, unusual in urban area. Northern side is exceptionally rich botanically, particularly in urban context. Basil thyme present (BAP/S41).	Designate as LWS.	n/a
BH73 London Road Station	71 - London Road Station (August 2011)	y	y	y	n	y	n	y	y	y	n	n	y	?	?	n	y	y	n	y	y	y	y	y	Deciduous woodland of over a hectare in size is unusual in the urban area of B&H and certainly this close to the town centre. The site forms an important wildlife corridor. Land to the rear of 140-146 Springfield Road has recently been cleared in preparation for a housing development. This area should therefore be excluded from the LWS.	Designate as LWS, excluding the area to the rear of 140-146 Springfield Road.	n/a
BH75 Park Royal & High School	40 - Park Royal & High School (July 2012)	y	y	y	n	n	n	n	y	y	n	n	y	y	n	n	n	n	y	n	n	y	y	y	Woodland in central Brighton is very unusual.	Designate as LWS, excluding buildings and hard standing.	n/a
BH76 Rottingdean Pond	132 - Rottingdean Pond (July 2012)	y	y	y	n	y	y	y	y	y	y	y	y	y	n	n	n	n	n	y	y	y	y	y	Large ponds (BAP/S41) are unusual in B&H. Site supports population of common toad (BAP/S41).	Designate as LWS.	n/a
BH77 Madeira Drive Green Wall	105 - Madeira Drive Green Wall (March 2010 & May 2013)	?	y	y	n	n	y	y	y	y	y	y	y	n	n	n	n	y	n	y	y	y	y	y	Disputedly the largest and oldest green wall in Britain with a mixture of non-native and native species. Hoary Stock (Local BAP species) present.	Designate as LWS.	n/a
BH78 Meadowvale	128 - Meadow Vale Paddocks (planning application 2015/2017)	?	?	?									y	?	?	?	?	?	?	y	n	y	y	At the time of the 2013 panel, the site was not surveyed in detail, but an initial survey reported no species or habitat of note. However, numerous surveys have been undertaken since in relation to applications for housing development which have highlighted the presence of species-rich grassland and a significant population of Red Star-thistle (S41) as well as the presence of other notable species. The site qualifies for designation as a LWS under Sussex criteria for the presence of RST alone.	Designate as LWS.	n/a	
BH79 South Bevendean Down	89 - South Bevendean Down (October 2011)	y	y	n	y	n	n	y	y	y	y	y	y	y	n	y	y	n	n	y	y	y	y	y	The site does not meet all three mandatory criteria from the B&H selection criteria, but the 2013 panel agreed it should be designated as a LWS, presumably for its forest structure and its value for appreciation of nature which is listed as an important contributory factor. The site meets the Sussex criteria.	Designate as LWS.	n/a

BH80 St Leonards Churchyard	22 - St Leonards Churchyard (October 2010)	y	y	y	n	y	y	n	y	y	n	n	y	n	n	n	y	y	n	y	y	y	The report used to inform the 2013 panel noted the potential for the Church building to support bats; as such, the building should be included in the boundary of the LWS. The site offers a wildlife haven within an urban environment and potentially acts as a stepping stone for the movement of wildlife through the landscape.	Designate as LWS including the church building.	n/a
BH81 Stevenson Road Quarry	103 - Stevenson Road Quarry (August 2011)	?	?	y	y	y	y	n	y	n	n	y	n	n	n	n	y	n	y	y	y	y	Vegetated chalk cliffs are unusual away from the coast in B&H. Site supports three species of reptiles making it a Key Reptile Site under best practice guidelines.	Designate as LWS.	n/a
BH82 Surrenden Crescent & Surrenden Road	56a - Surrenden Crescent & Surrenden Road (2010 - 2011)	y	y	y	n	y	n	y	n	y	n	y	n	n	n	y	n	n	y	y	y	y	Site supports a wide variety of fungi, some scarce.	Designate as LWS.	n/a
BH83 Surrenden Field Copse	54 - Surrenden Field Copse (August 2012)	y	y	y	n	n	y	y	n	y	n	y	y	y	n	n	y	n	y	y	y	y	Important area of secluded woodland within an urban environment.	Designate as LWS.	n/a
BH85 Withdean Park Copse	53 - Withdean Park Copse (August 2012)	y	y	y	n	y	y	n	y	y	y	y	y	y	n	n	n	n	n	y	y	y	Second largest area of mature, deciduous woodland in urban area of B&H. Site retains ancient woodland indicators.	Designate as LWS.	n/a
BH88 Sidehill Scrub	06 - Sidehill Scrub (September 2011)	y	y	y	n	n	n	y	y	y	y	n	y	n	n	n	n	y	n	y	y	y	A small but well established area of mixed scrub providing an important wildlife corridor between the City and the Downs. Includes a notable specimen of Wych Elm and a large population of starlings. As such, it meets both B&H and Sussex criteria.	Designate as LWS.	n/a
BH89 Dyke Trail South	18 - Dyke Trail South (October 2010)	y	y	y	n	n	n	y	n	y	n	n	y	n	n	n	n	y	n	y	n	y	Site meets both the B&H and Sussex criteria, with the most important features being the wildlife corridor and the presence of a population of slow worm. The site was declined in 2013, largely due to the fact that the site is poorly managed with dumping being a major issue. Given the value the site has as a wildlife corridor and the presence of a population of slow worm (S41 species, protected under the Wildlife and Countryside Act 1981, as amended) within the site, it is the opinion of the 2017 panel that the site should be designated. The designation should include the dense native scrub but not the small strip of woodland which runs north-south, which is of poor quality.	Designate as LWS, excluding woodland strip.	n/a
BH101 Patcham Court Field	65 - Patcham Court Field (August 2011)	y	y	y	n	y	n	y	n	y	y	y	y	?	?	?	?	?	?	y	n	y	As the site meets the mandatory B&H criteria it is unclear why the site was rejected by the 2013 panel. At the time of the survey (2011) the site met Sussex criteria (slow worm). However, there is insufficient up-to-date information to assess the site against Sussex criteria.	Do not designate but retain on list of potential LWS for future survey.	Site surveyed by LWS Officer on 20/08/18. Site supports dense scrub, semi-improved neutral grassland, hedgerow and a mosaic of scattered scrub, grass, tall ruderal and introduced shrubs. The site meets selection criteria for supporting a S41 habitat, a nationally scarce species and a habitat mosaic. The site provides connectivity between Braeside Avenue Scrub LWS and the A27 verge, and has value for appreciation of nature. Recommendation to designate as a LWS supported by Technical Panel 12/02/19.

BH100 Ovingdean Copse	130 - Ovingdean Copse (no survey)	? ? ?																		n	n	The site was not surveyed therefore insufficient information to assess it against B&H or Sussex criteria.	Do not designate but retain on list of potential LWS for future survey.	Site surveyed by LWS Officer 30/09/18 and 08/02/19. Site includes a strip of semi-natural broadleaved woodland which continues south behind the properties off Longhill Road. The site forms part of a wider network of woodland habitat within the local landscape, providing connective habitat linking other LWS to the north and south. Meets selection criteria as supports S41 habitat and protected species. Recommendation to designate as a LWS supported by Technical Panel 12/02/19. The site was re-considered by the Technical Panel on 17/12/19 following representations by the landowners. Panel agreed that the area of scrub and scattered trees forms part of, and adds to, the wildlife corridor and should be retained, but that the boundary of the southern section of the site should be amended to exclude a formal garden area.			
Redhill Sports Ground	47 - Redhill Sports Ground (data compiled from Febraury 2006 and October 2009)	? ? ?																			y	n	The 2013 panel assessment was based on a survey report conducted to support a planning application for a housing development. Permission was granted in 2011 and from an assessment of aerial photographs, the southern part of the site has been developed. In the light of the development, there is insufficient information to assess the site against B&H or Sussex criteria, although part of the site may still be worthy of consideration.	Do not designate but retain on list of potential LWS for future survey.	As the permitted development is restricted within the site, part of the site may still be worthy of consideration. As such, it is recommended that the site is retained as a candidate at this stage.		
BH71 Hove Park Reservoir	30 - Hove Park Reservoir (June 2011)	y y y	n	n	y	y	y	y	n	n	y	n	y	y	y	y							y	n	Site offers refuge for mammals and birds in the urban environment.	Designate as LWS.	Two representations. 1) Individual landowner provided evidence that portion of site has changed from reservoir to residential and is no longer maintained as a meadow lawn. 2) Southern Water stated that site is not of significant ecological interest and designation is not compatible with primary function of the owner organisation. Site was surveyed by LWS Officer on 21/09/19 and confirmed that it does not meet selection criteria. Recommendation not to proceed with the designation supported by the Technical Panel via email.
Alexandra Court	23 - Alexandra Court (October 2010)	n	n	n																					Minimal interest.	Do not designate.	n/a
Beaufort Terrace	74 - Beaufort Terrace (no survey)	? ? ?																							The site was not surveyed therefore insufficient information to assess it against B&H or Sussex criteria.	Do not designate but retain on list of potential LWS for future survey.	Southern Water stated that site is not of significant ecological interest and designation is not compatible with primary function of the owner organisation. Site was surveyed by LWS Officer on 21/09/19 and confirmed that it does not meet selection criteria. Recommendation not to proceed with the designation supported by the Technical Panel via email.
Black Lion Copse	52 - Black Lion Copse (July 2011)	n	n	n																					Site small and highly modified.	Do not designate.	n/a
Elmore Road Scrub	73 - Elmore Road Scrub (July 2011)	n	n	y																					A small area of much modified woodland which a high proportion of non-native species. Whilst the site does meet Sussex criteria given the presence of a badger sett, overall the nature and condition of the habitat is not considered enough to merit designation.	Do not designate.	n/a
Heath Hill Down	88 - Heath Hill Down (November 2011)	y	y	y	y	y	n	y	y	y	y	y	y	y	y										Site is already designated as a LNR.	Do not designate as site sufficiently protected through LNR status.	n/a
Howard Terrace Slopes	61 - Howard Terrace Slopes (August 2011)	n	n	n																					Woodland is relatively recent in origin and species-poor, and falls below the minimum size threshold on the B&H criteria. Insufficient information available to assess the site against Sussex criteria.	Do not designate.	n/a

Loxdale Centre	09 - Loxdale Centre (October 2011)	n	n	n															Although the site offers a significant area of trees within the Portslade context, the woodland is not semi-natural and that and the field layer are species poor. Insufficient information available to assess the site against Sussex criteria.	Do not designate.	n/a
Mill View Hospital	21 - Mill View Hospital (October 2011)	n	n	n															Inaccessible woodland that falls below the minimum size threshold on the B&H criteria. Insufficient information available to assess the site against Sussex criteria.	Do not designate.	n/a
Millers Road	43 - Millers Road (July 2011)	n	n	n															Rejected by 2013 panel because species poor and fell below minimum size threshold. Insufficient information available to assess the site against Sussex criteria.	Do not designate.	n/a
Oak Close Copse	55 - Oak Close Copse (July 2012)	n	n	n															Rejected by 2013 panel because fell below minimum size threshold and considered too modified. Insufficient information available to assess the site against Sussex criteria.	Do not designate.	n/a
Patcham Court Farm	64 - Patcham Court Farm (no survey)	?	?	?															The site was not surveyed therefore insufficient information to assess it against B&H or Sussex criteria.	Do not designate but retain on list of potential LWS for future survey.	The site has a long-term allocation for office use and pre-application discussions are currently in progress for development of the site. In line with government policy and guidance, any development of the site will need to be informed by up-to-date ecological survey information and will need to follow the mitigation hierarchy and provide biodiversity net gain. As such, it is unlikely that designation as a LWS would have any material benefit at this stage. Do not proceed with designation.
Preston Twins	56 - The Preston Twins (September 2012)	n	n	y															The nature conservation interest of the site is two ancient Elms. However, these trees are already protected.	Do not designate.	n/a
Roundhill Copse	72 - Roundhill Copse (no survey)	?	?	?															The site was not surveyed therefore insufficient information to assess it against B&H or Sussex criteria.	Do not designate but retain on list of potential LWS for future survey.	From an assessment of maps, aerial photographs and local biodiversity records, the site is an enclosed area at the back of private gardens and is unlikely to support sufficient interest to meet the selection criteria. The recommendation, supported by the LWS Technical Panel, is that the site is not designated as a LWS and should be removed from the list of candidate sites.
Scrub at Mill Hill Roundabout	51 - Scrub at Mill Hill Roundabout (July 2011)	y	?	n															The site meets the mandatory B&H criteria for habitat size (and potentially diversity) but not for rare or exceptional features. Insufficient information to assess the site against Sussex criteria.	Do not designate.	n/a
St Andrew's Old Church	39 - St Andrew Old Church (no survey)	?	?	?															The site was not surveyed therefore insufficient information to assess it against B&H or Sussex criteria.	Do not designate.	n/a
The Engineerium	38 - The Engineerium (no survey)	?	?	?															The site was not surveyed therefore insufficient information to assess it against B&H or Sussex criteria.	Do not designate but retain on list of potential LWS for future survey.	Southern Water stated that site is not of significant ecological interest and designation is not compatible with primary function of the owner organisation. Site was surveyed by LWS Officer on 21/09/19 and confirmed that it does not meet selection criteria. Recommendation not to proceed with the designation supported by the Technical Panel via email.
Tongdean Rise	46 - Tongdean Rise (August 2012)	n	n	n															The site was rejected by the 2013 panel as it fell below the minimum size threshold. Insufficient information to assess it against Sussex criteria.	Do no designate.	n/a
Whittinghame Gardens	62 - Whittinghame Gardens (August 2011)	n	n	n															The site was rejected by the 2013 panel as it fell below the minimum size threshold. Insufficient information to assess it against Sussex criteria.	Do not designate.	n/a
Woollards Field	96 - Woollards Field (no survey)	?	?	?															Insufficient information available to assess against B&H or Sussex criteria.	Do not designate.	n/a

# Appendix 6a Local Wildlife Sites Updated February 2020

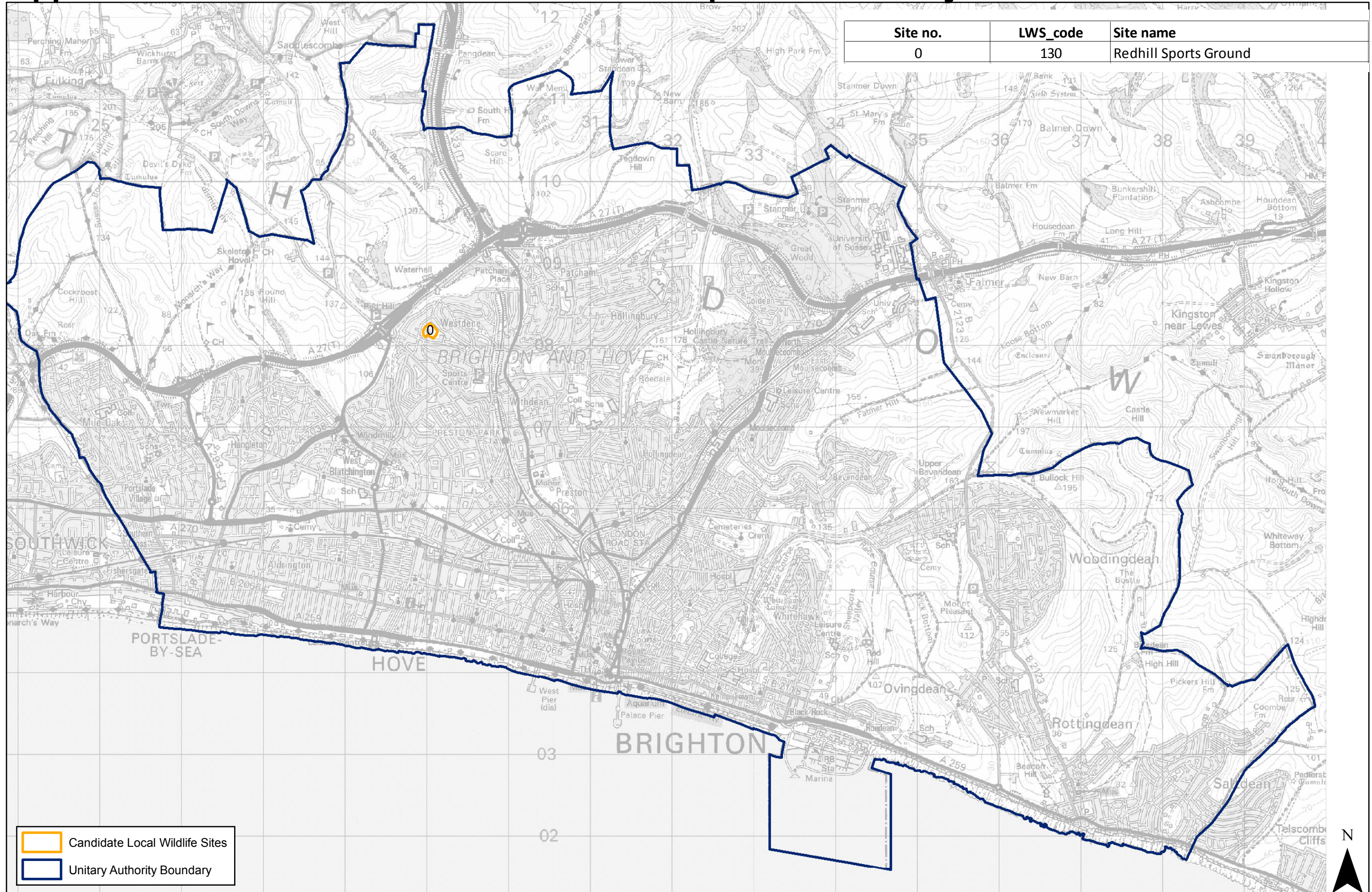


Site no.	Site ID	Site name
0	BH15	Three Cornered Copse
1	BH17	Bramble Rise Copse
2	BH21	Foredown Allotments
3	BH27	Crespin Way
4	BH28	Brighton University
5	BH12	Toad's Hole Valley
6	BH30	Woodvale, Extra-mural & Downs Cemeteries
7	BH31	Black Rock Beach
8	BH32	Wilson Avenue, Whitehawk
9	BH33	Brighton Marina
10	BH34	Sheepcote Valley
11	BH35	Westlain Plantation/Hog Plantation
12	BH36	Tenant, Lain & Moon's Gate Woods
13	BH60	St Helens Churchyard
14	BH62	Honeysett
15	BH63	Braeside Avenue Scrub
16	BH64	Cardinal Newman School
17	BH65	Cliff Corner
18	BH67	Dorothy Stringer Wildlife Area
19	BH69	Highcroft Villas
20	BH70	Hodshrove Wood
21	BH77	Madeira Drive Green Wall
22	BH78	Meadowvale
23	BH75	Park Royal & High School
24	BH76	Rottingdean Pond
25	BH80	St Leonards Churchyard
26	BH85	Withdean Park Copse
27	BH81	Stevenson Road Quarry
28	BH82	Surrenden Crescent and Surrenden Road
29	BH72	Land at Westfield Avenue
30	BH29	Volks Railway
31	BH83	Surrenden Field Copse
32	BH25	Brighton Station
33	BH22	Oakdene, Southwick Hill
34	BH43	Wanderdown Road Open Space
35	BH73	London Road Station
36	BH07	Emmaus Gardens & St Nicholas
37	BH20	Tivoli Cose & Railway Woodland
38	BH09	Benfield Valley
39	BH26	Hollingbury Industrial Estate
40	BH66	Cliff Road Paddock
41	BH79	South Beveandean Down
42	BH02	Mile Oak Fields
43	BH10	Basin Road South
44	BH88	Sidehill Scrub
45	BH87	Land at Coldean Lane
46	BH86	Beveandean Horse Paddocks
47	BH89	Dyke Trail South
48	BH042	Ovingdean School Grounds
49	BH101	Patcham Court Field
50	BH100	Ovingdean Copse

Scale: 1:42,191

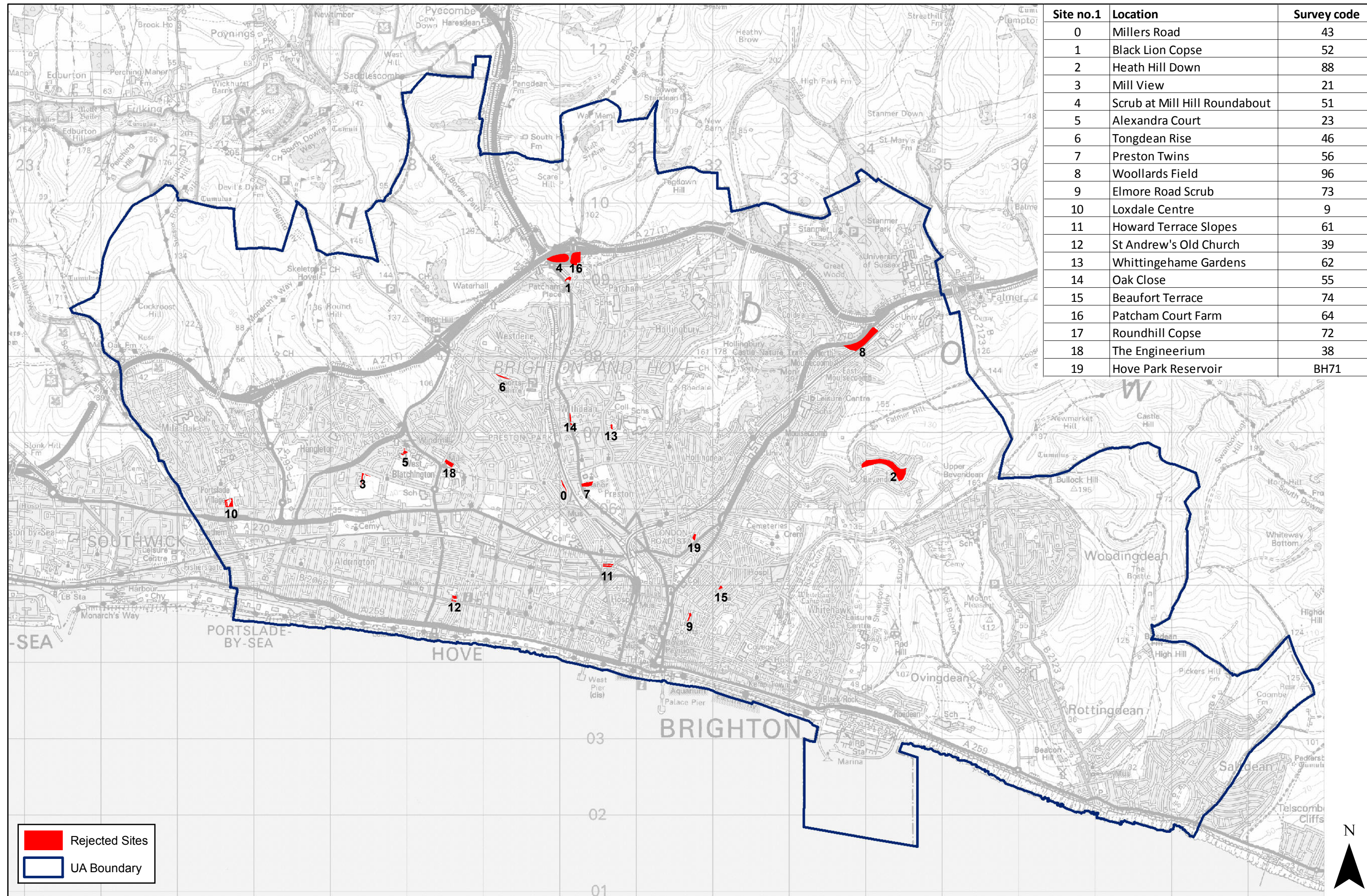


# Appendix 6b Candidate Local Wildlife Sites Updated February 2020



Scale: 1:42,191

# Appendix 6c Rejected Sites updated February 2020



Site no.1	Location	Survey code
0	Millers Road	43
1	Black Lion Copse	52
2	Heath Hill Down	88
3	Mill View	21
4	Scrub at Mill Hill Roundabout	51
5	Alexandra Court	23
6	Tongdean Rise	46
7	Preston Twins	56
8	Woollards Field	96
9	Elmore Road Scrub	73
10	Loxdale Centre	9
11	Howard Terrace Slopes	61
12	St Andrew's Old Church	39
13	Whittingehame Gardens	62
14	Oak Close	55
15	Beaufort Terrace	74
16	Patcham Court Farm	64
17	Roundhill Copse	72
18	The Engineerium	38
19	Hove Park Reservoir	BH71

Scale: 1:45,290